

THE NEW ROI

Return on Investigation from *Smart* Characterization Methods

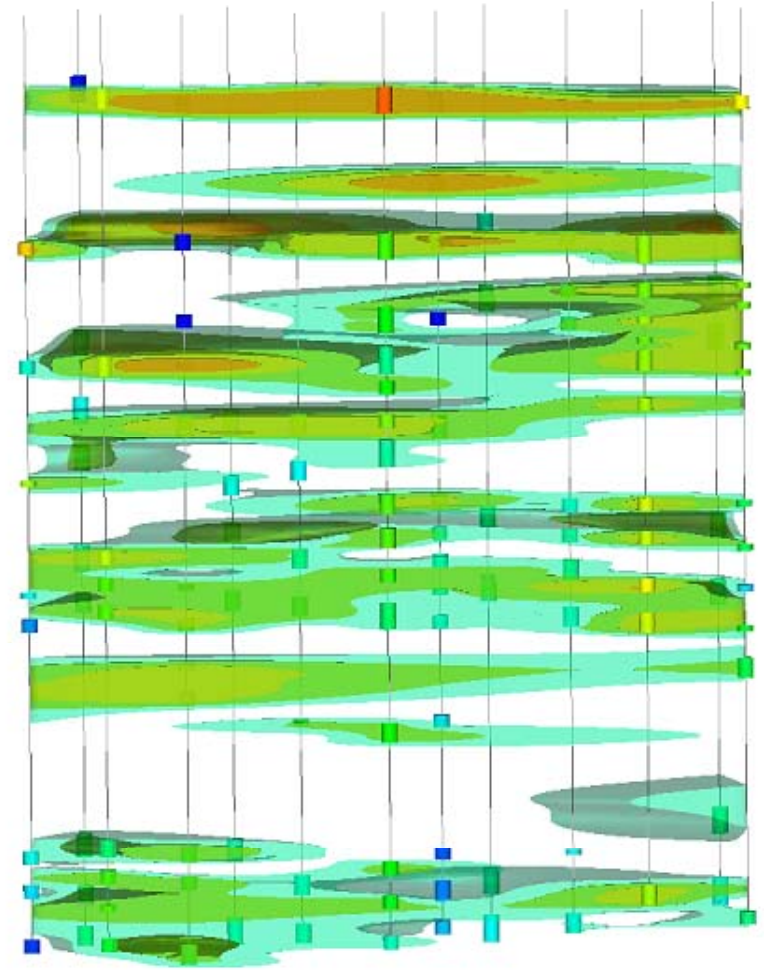
Joe Quinnan, PE, PG
Nick Welty, CPG, PG

December 2, 2015

FRTR General Meeting
Site Characterization for Effective Remediation

Agenda

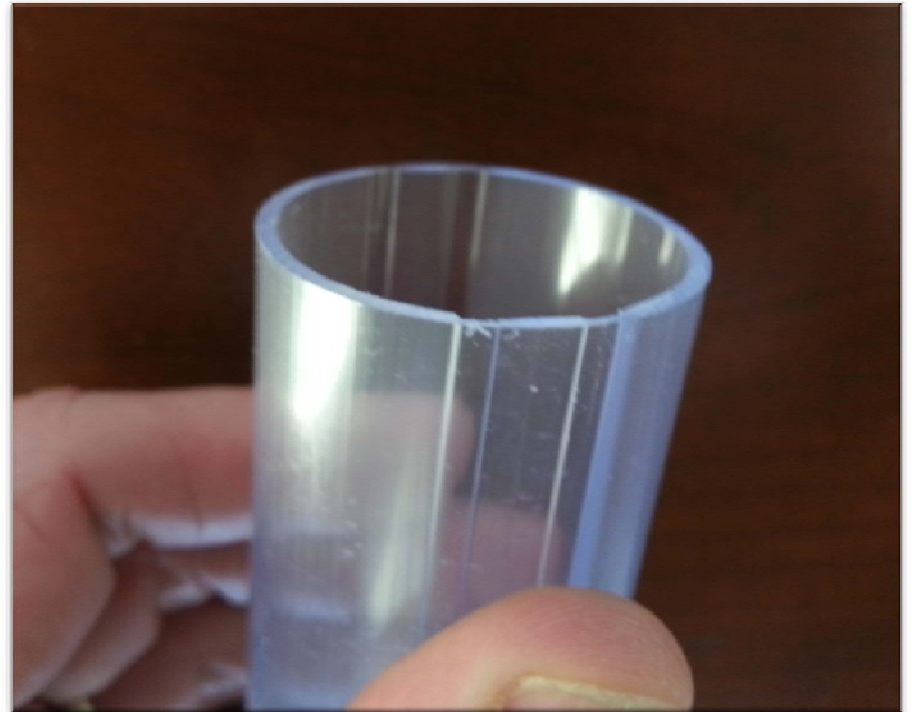
- Health and Safety Moment
- Return on Investigation
 - Exit Ramp Strategies
 - Smart Characterization
 - Flux-Based CSMs



Health and Safety Innovation



Zipliner





Zipliner

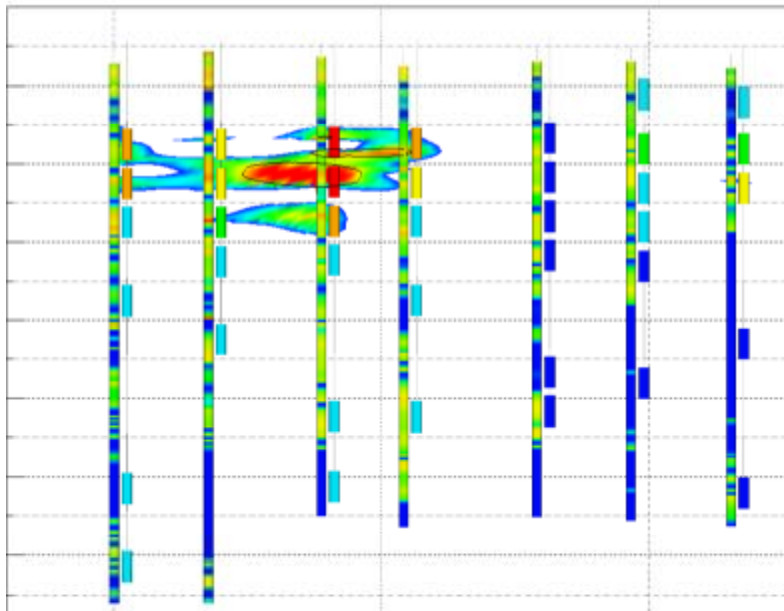
FEATURES

- Operates with drill tooling similar to standard liners.
- Designed to fit with AMS Power-Probe and the Geoprobe Systems direct push technologies.
- The ZipTool is the safest opening tool for soil sampling sleeves.
- Similar durability as standard liners.

The ROI of Smart Characterization

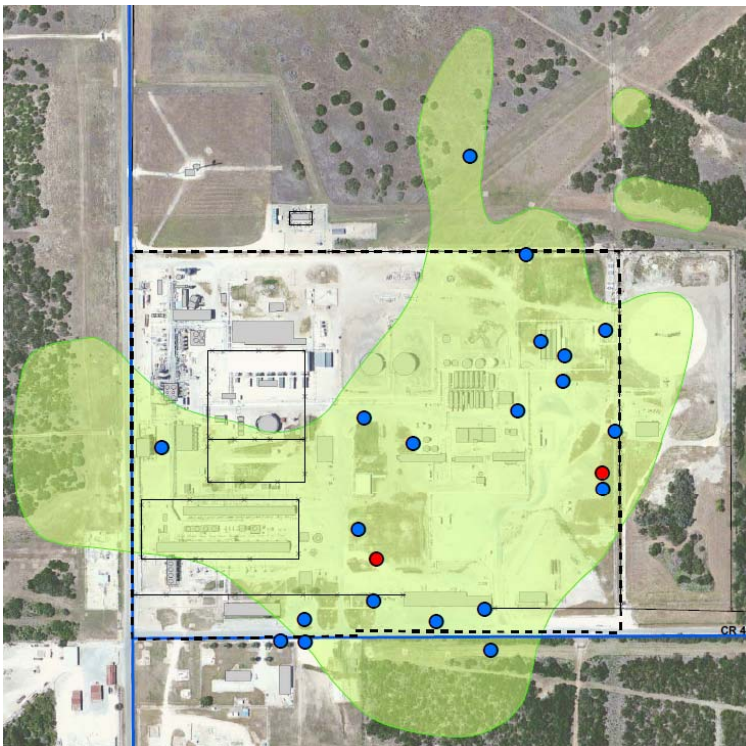


**90% of relative flux in
10% of cross-section**



Return on Investigation

**Client avoided
spending > \$5M
on slurry wall**



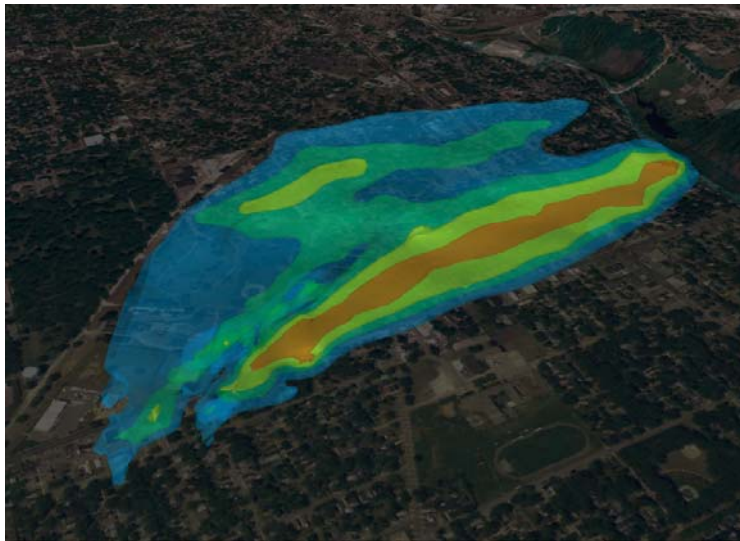
Return on Investigation
Client avoided
spending \$4 - \$5M
on active LNAPL
recovery



Unknown plume
extent

Smart
characterization

1-mile long, 10
PPM VOC plume

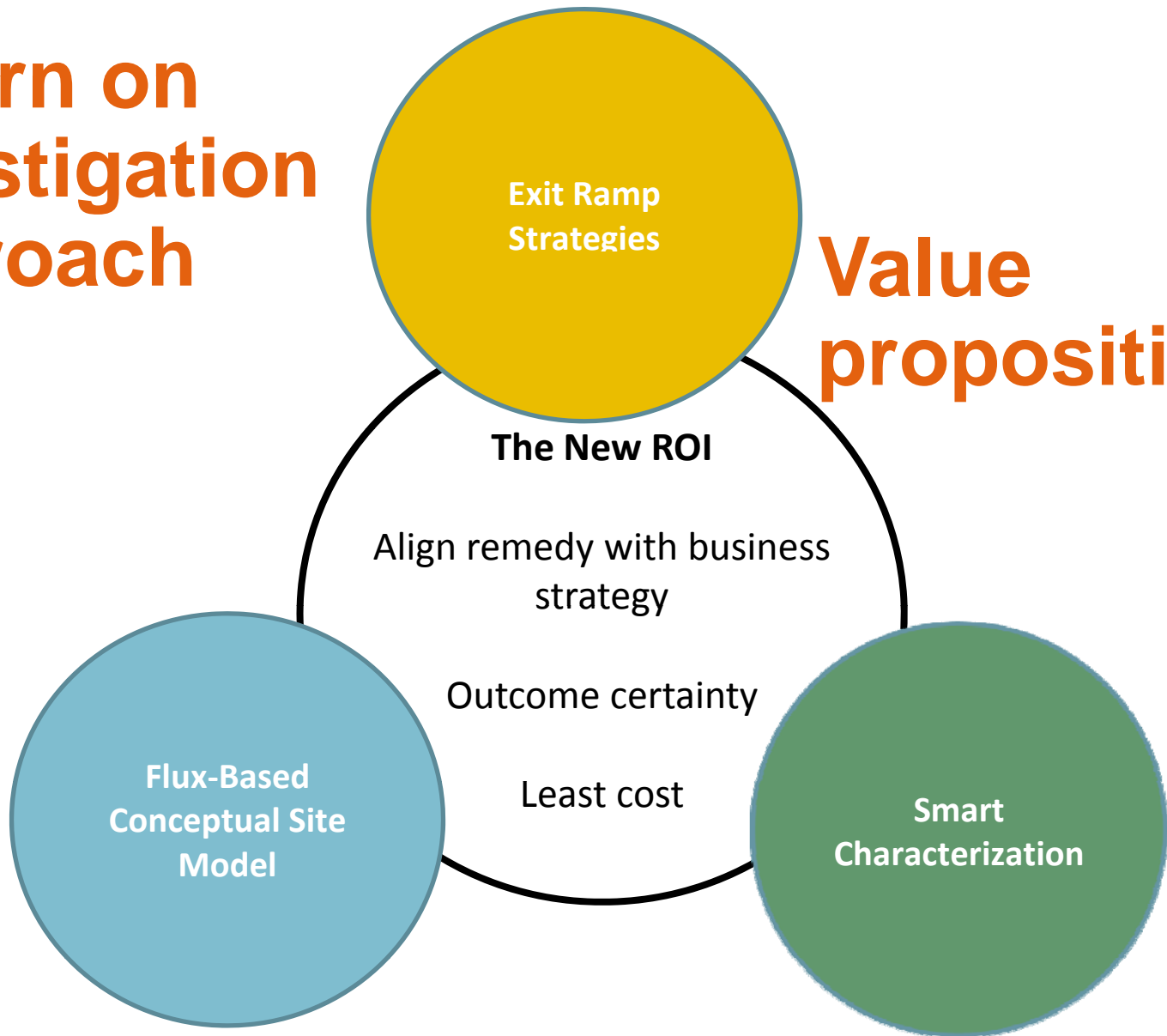


Return on Investigation

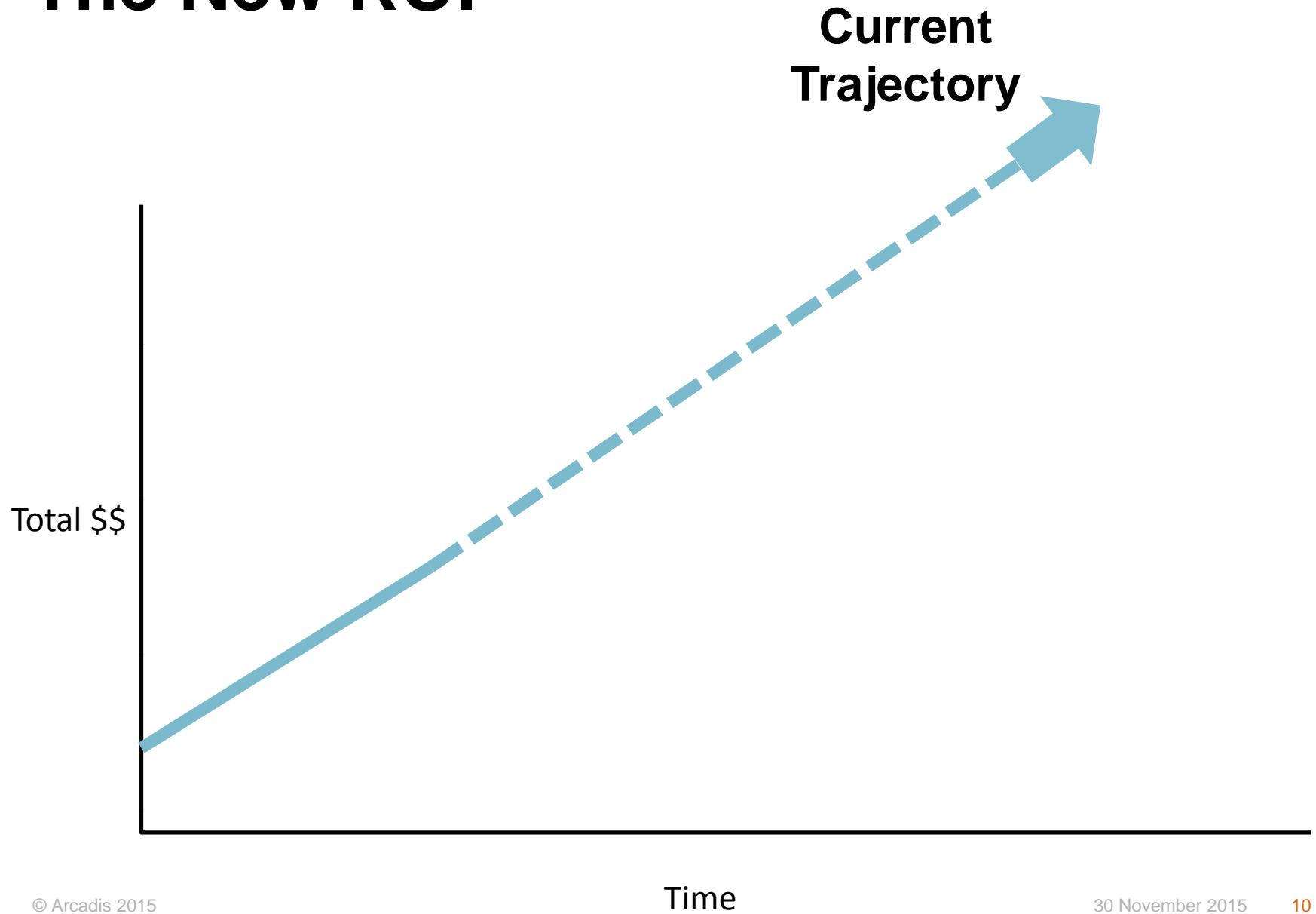
No active
remediation required

Return on Investigation Approach

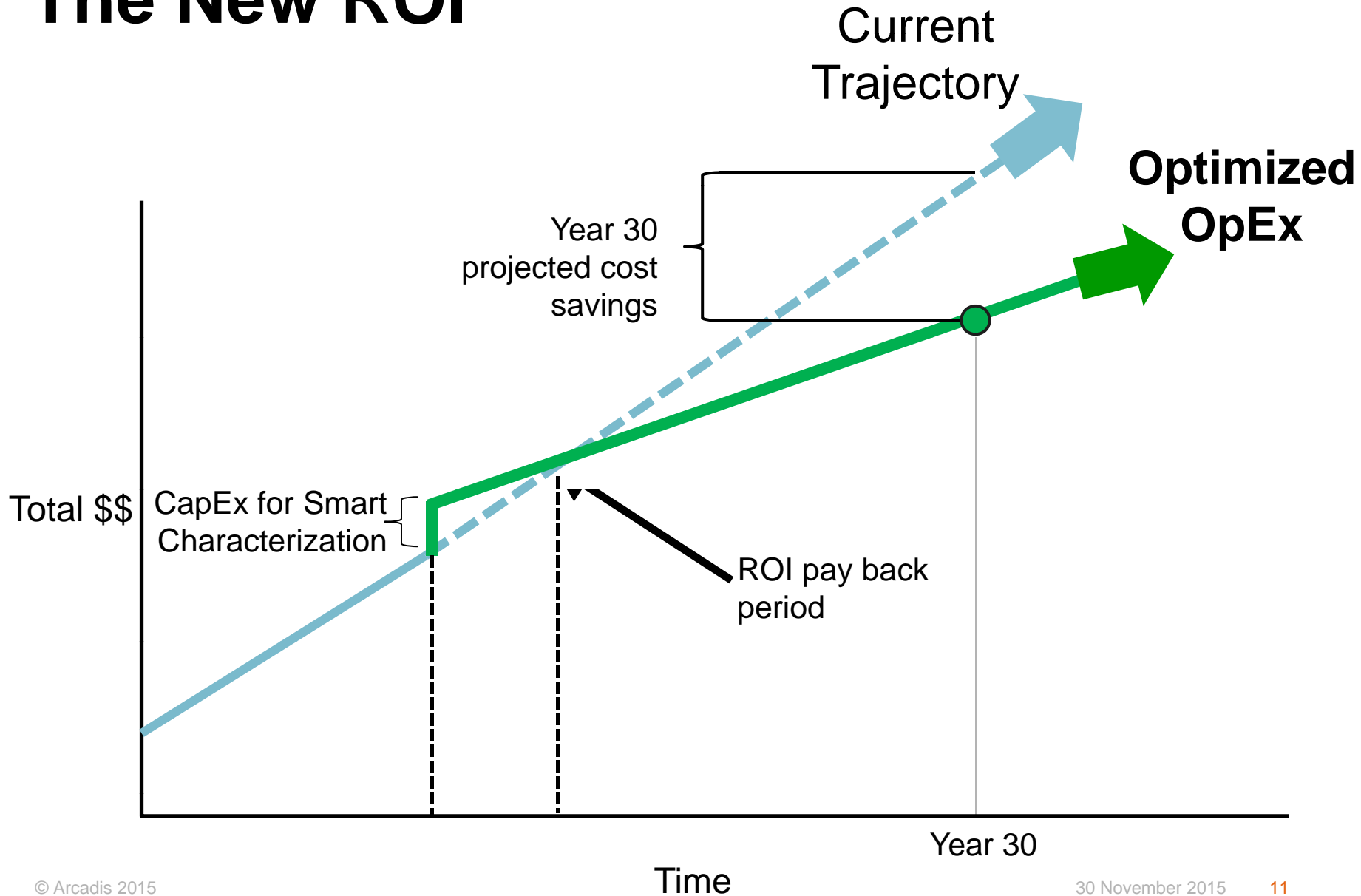
Value proposition



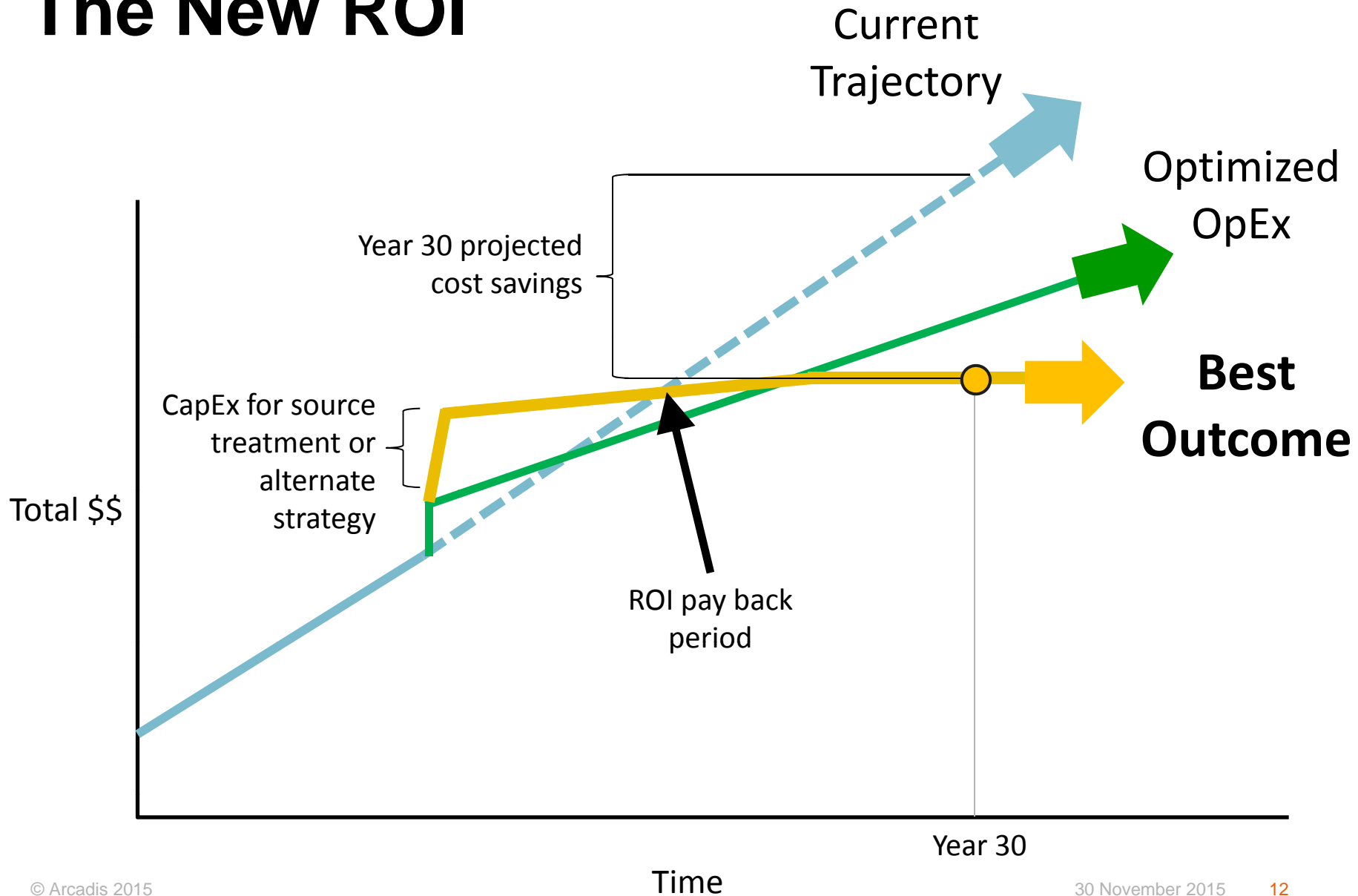
The New ROI



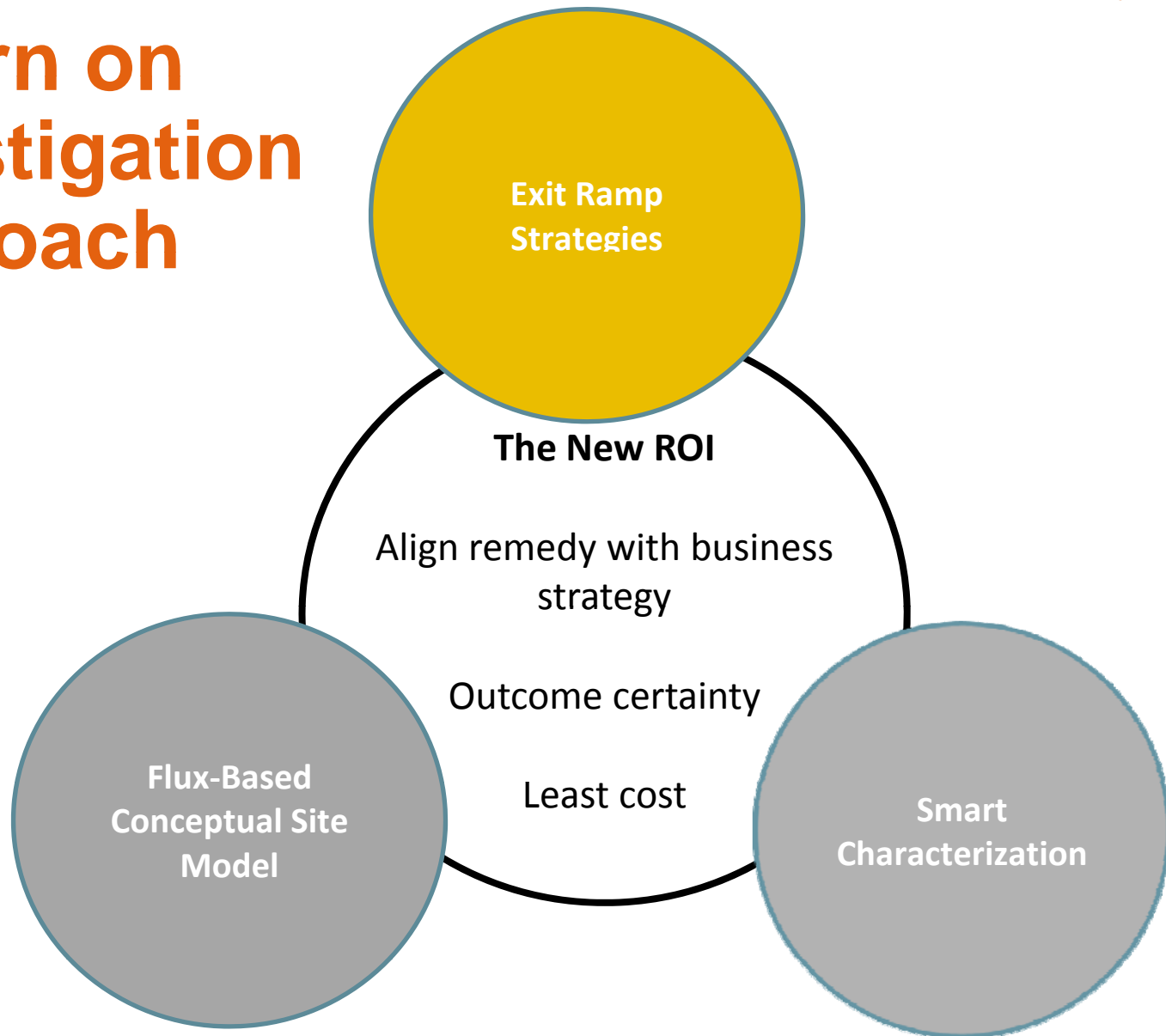
The New ROI

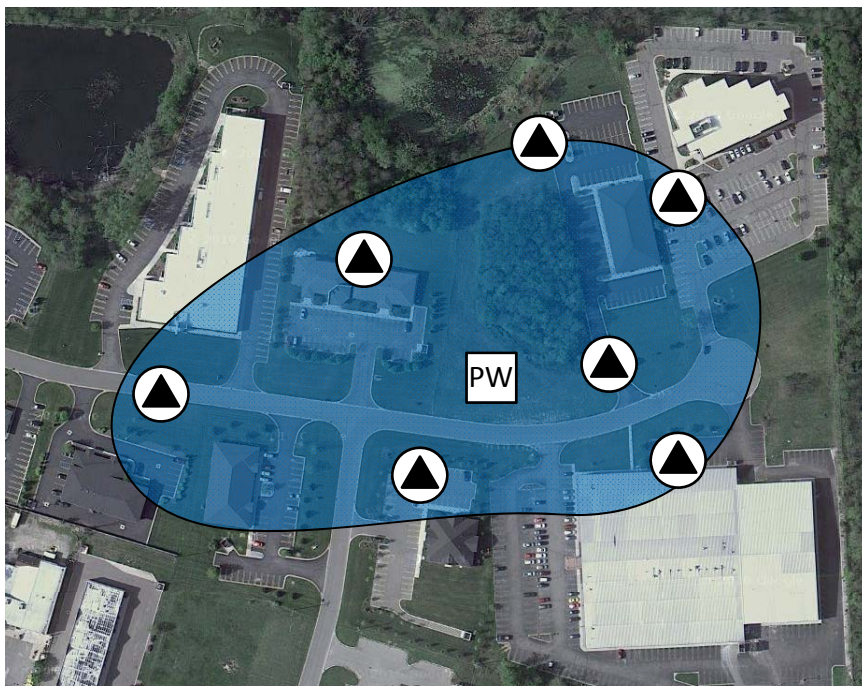


The New ROI



Return on Investigation Approach



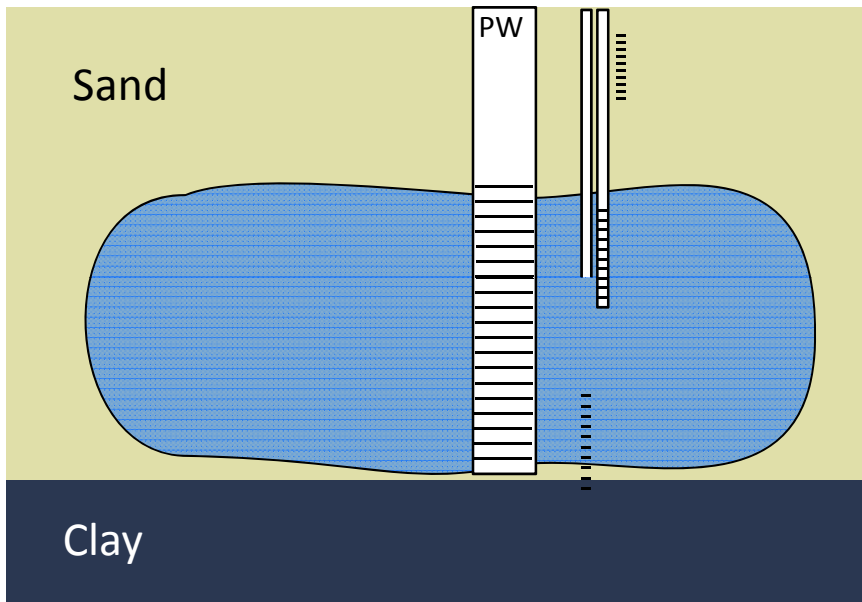


Background

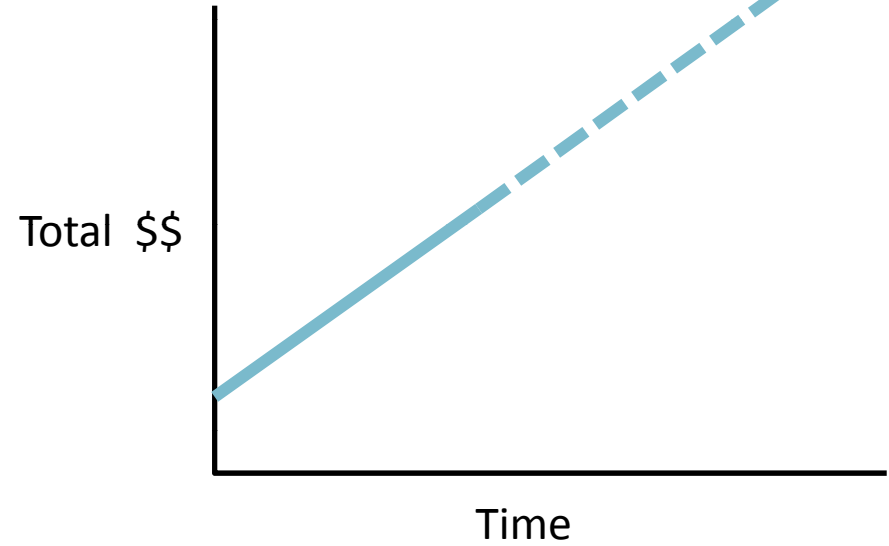
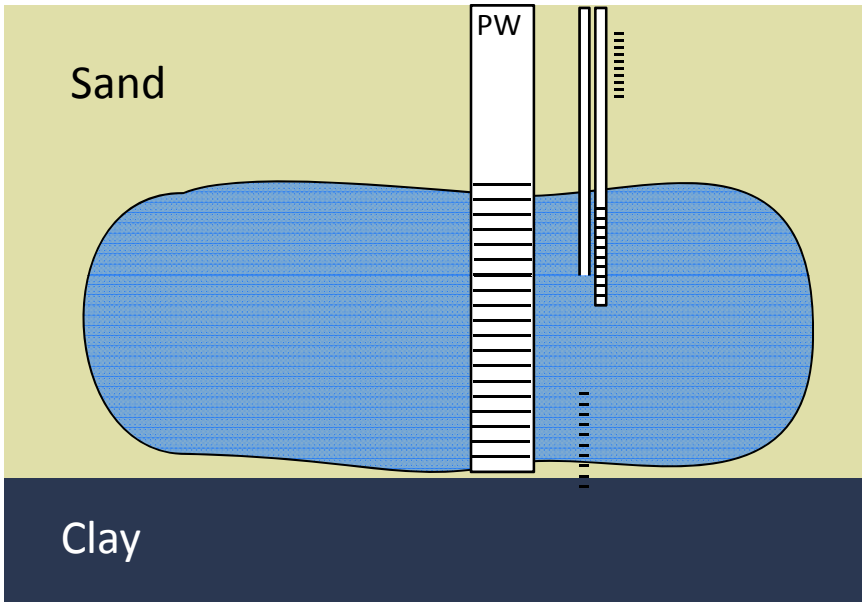
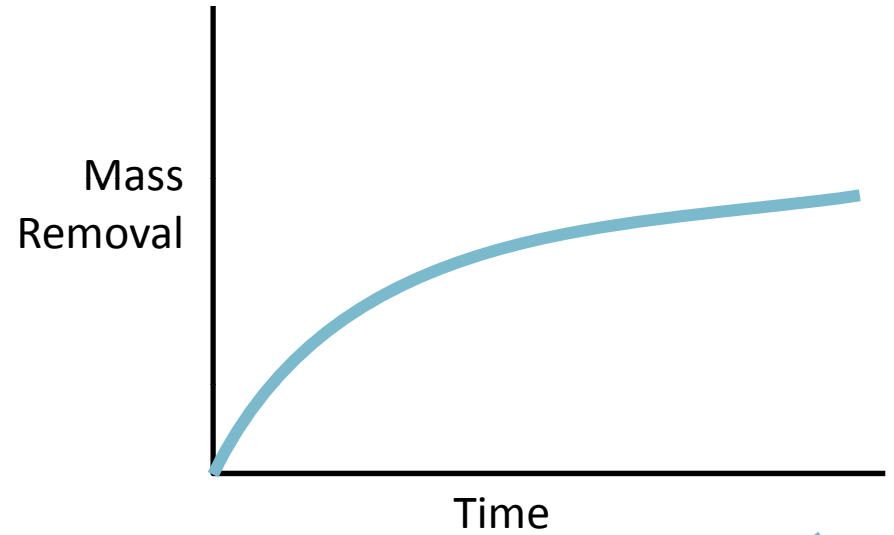
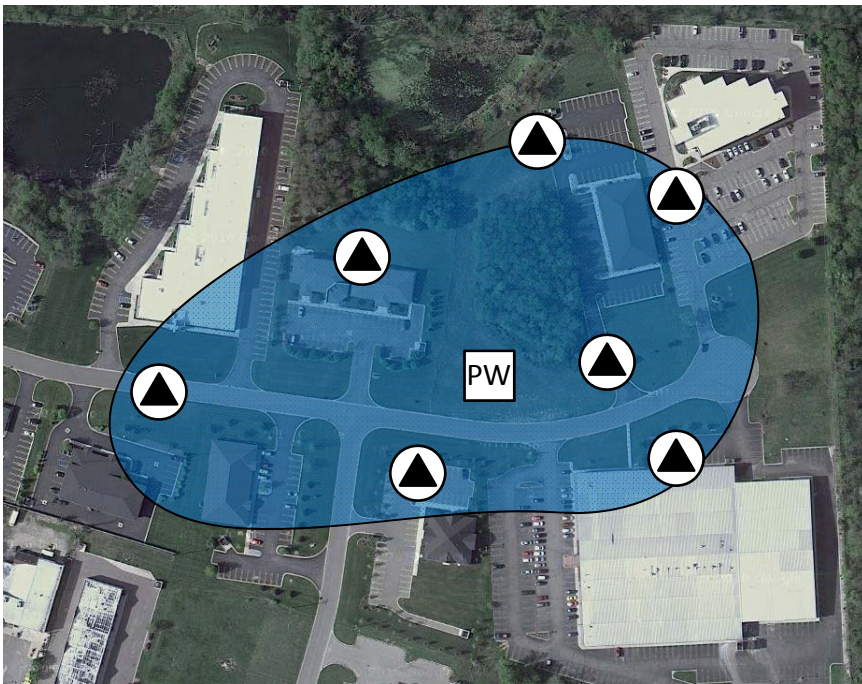
Diffuse VOC plume

Characterized with
monitoring wells

20 years of P&T

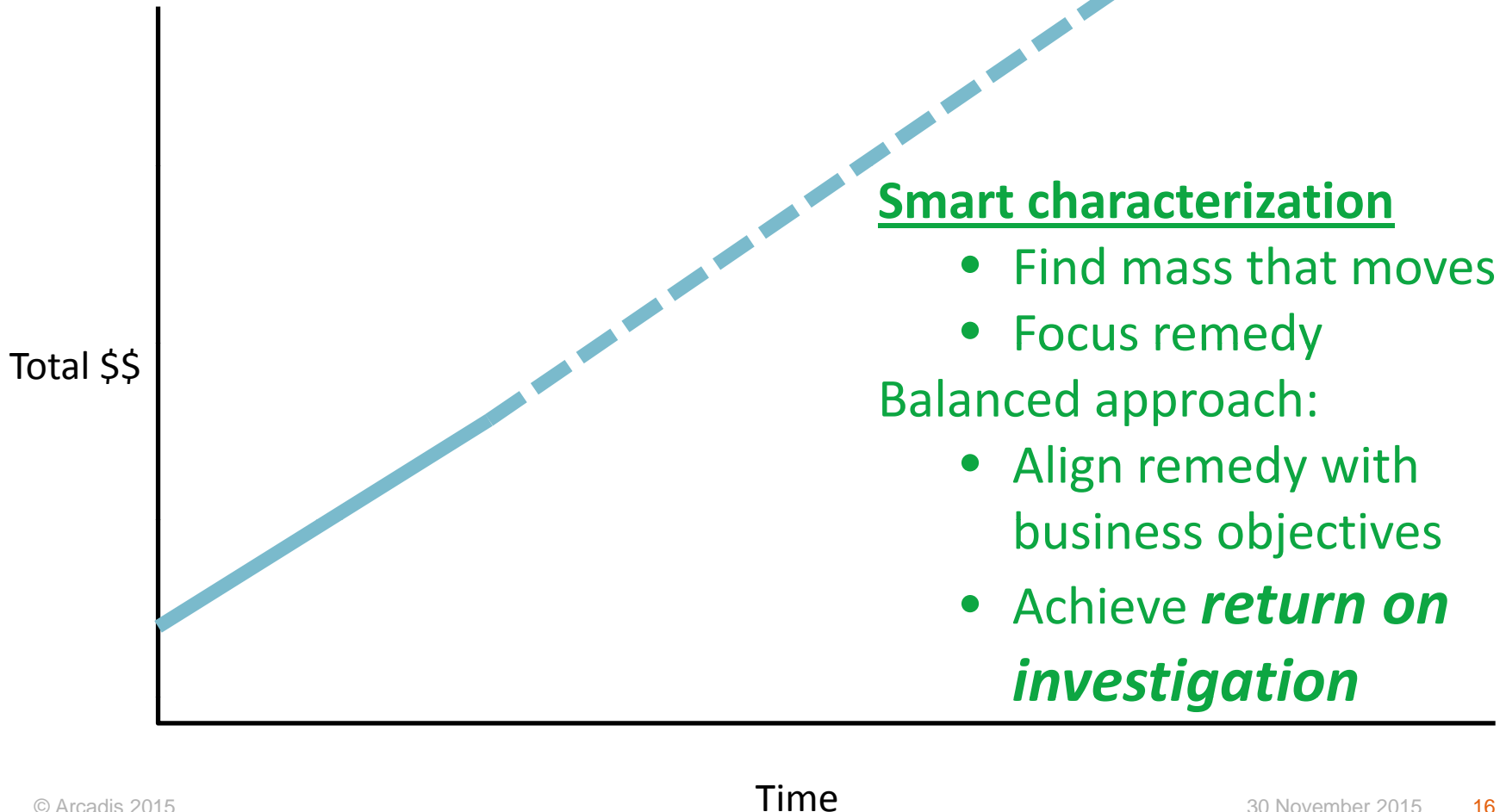


The Problem

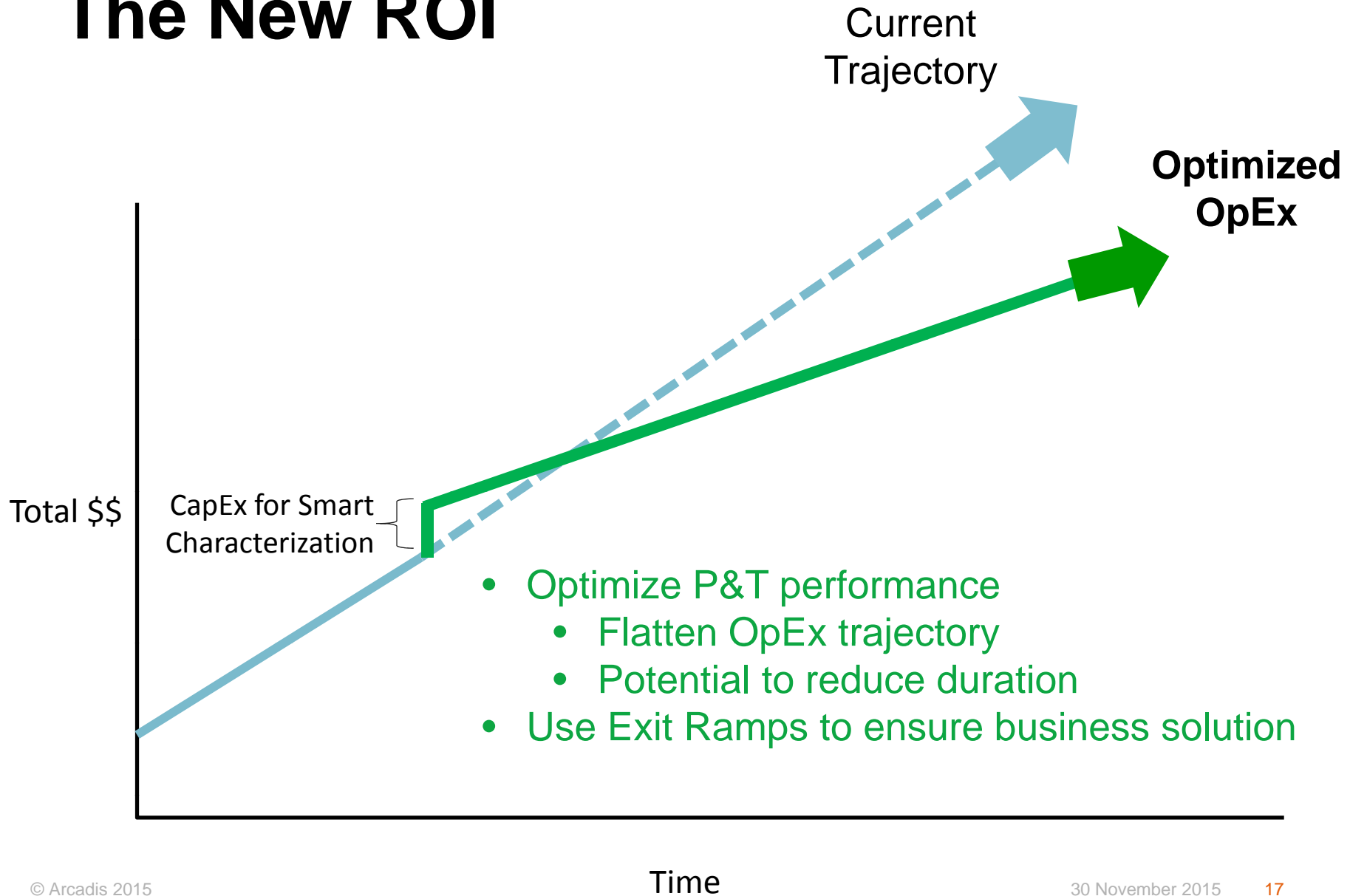


The New ROI

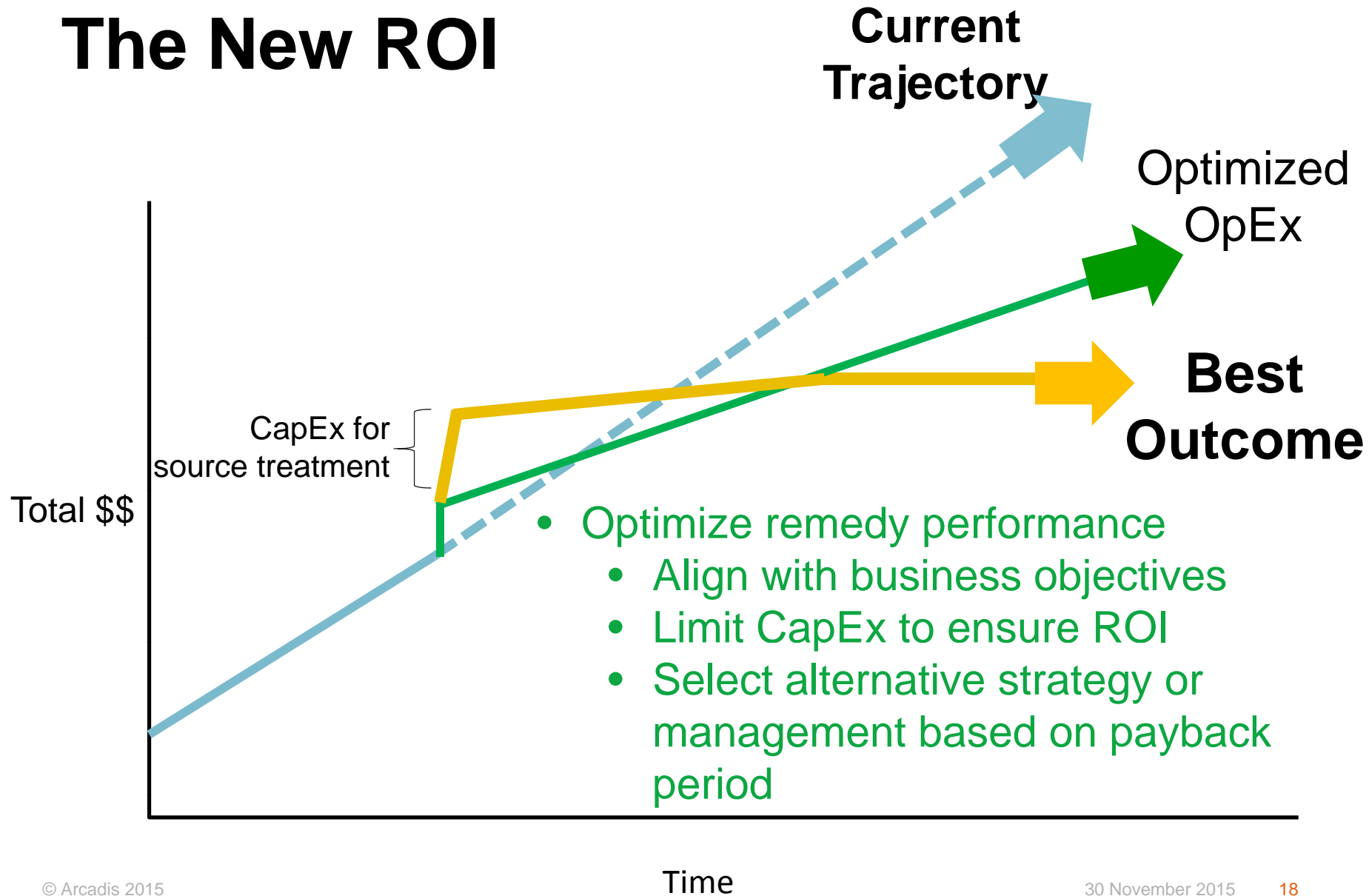
Current
Trajectory



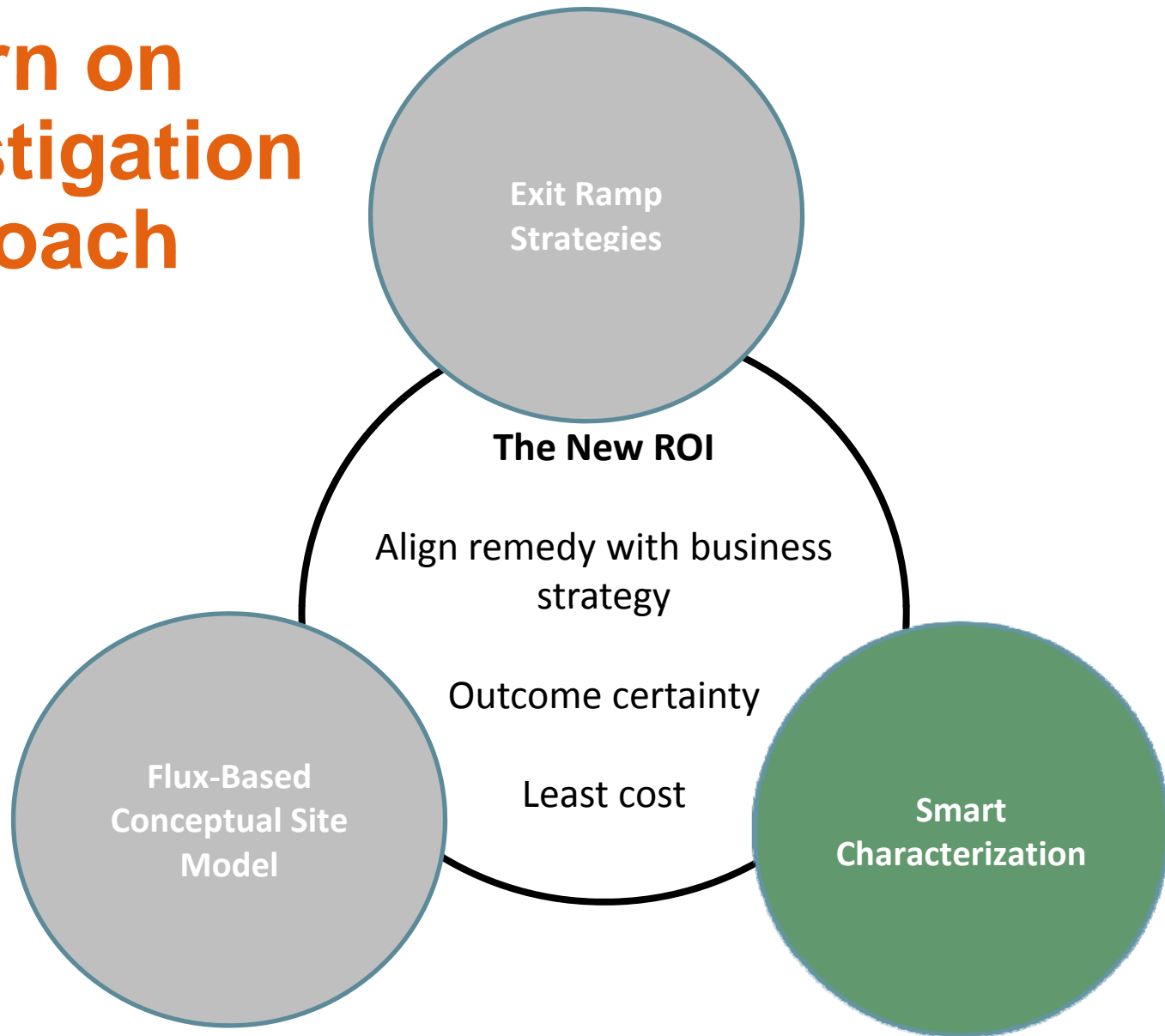
The New ROI

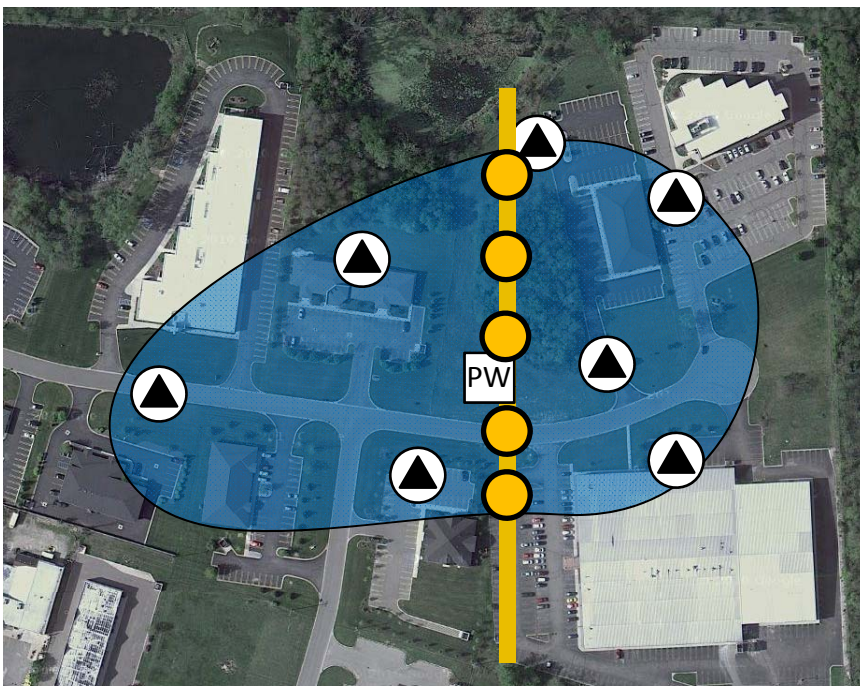


The New ROI



Return on Investigation Approach



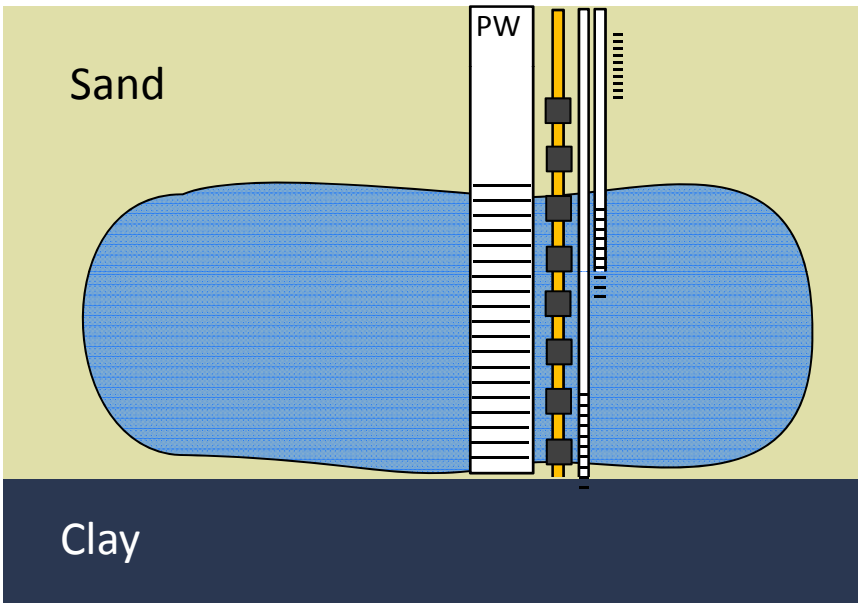


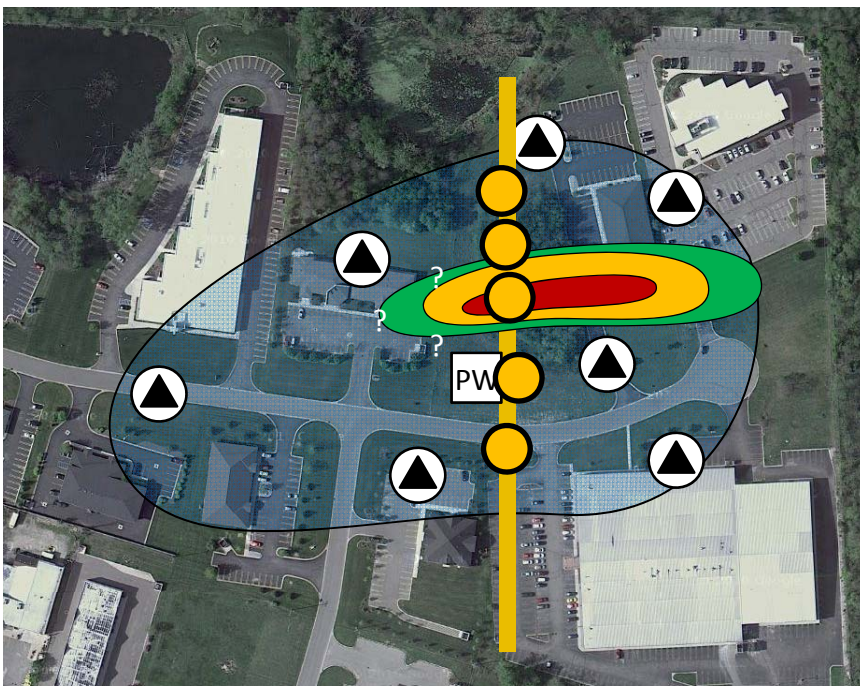
Exit Ramp₁ – Can P&T be optimized?

\$50K investment

Goal:

- Optimize P&T
- Reduce OpEx
- Reduce duration & increase mass removal

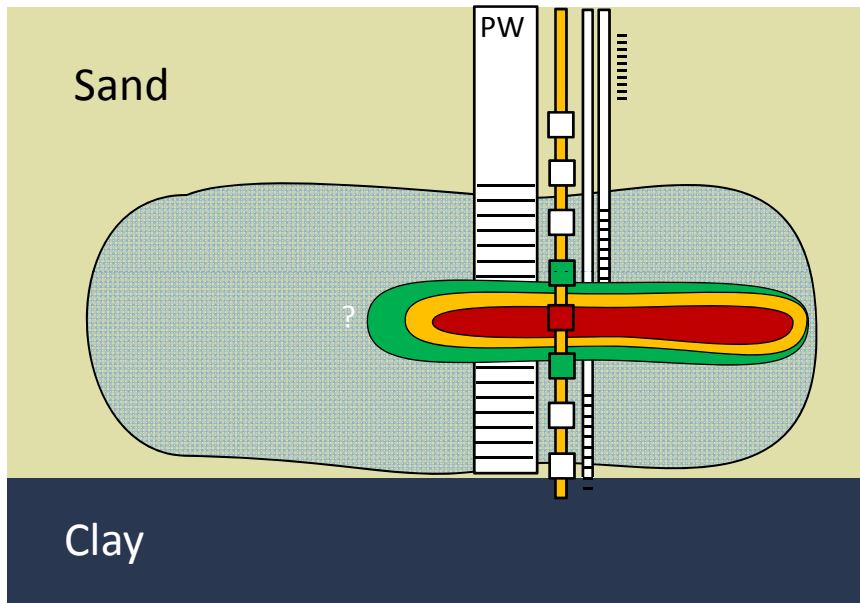




Exit Ramp 1

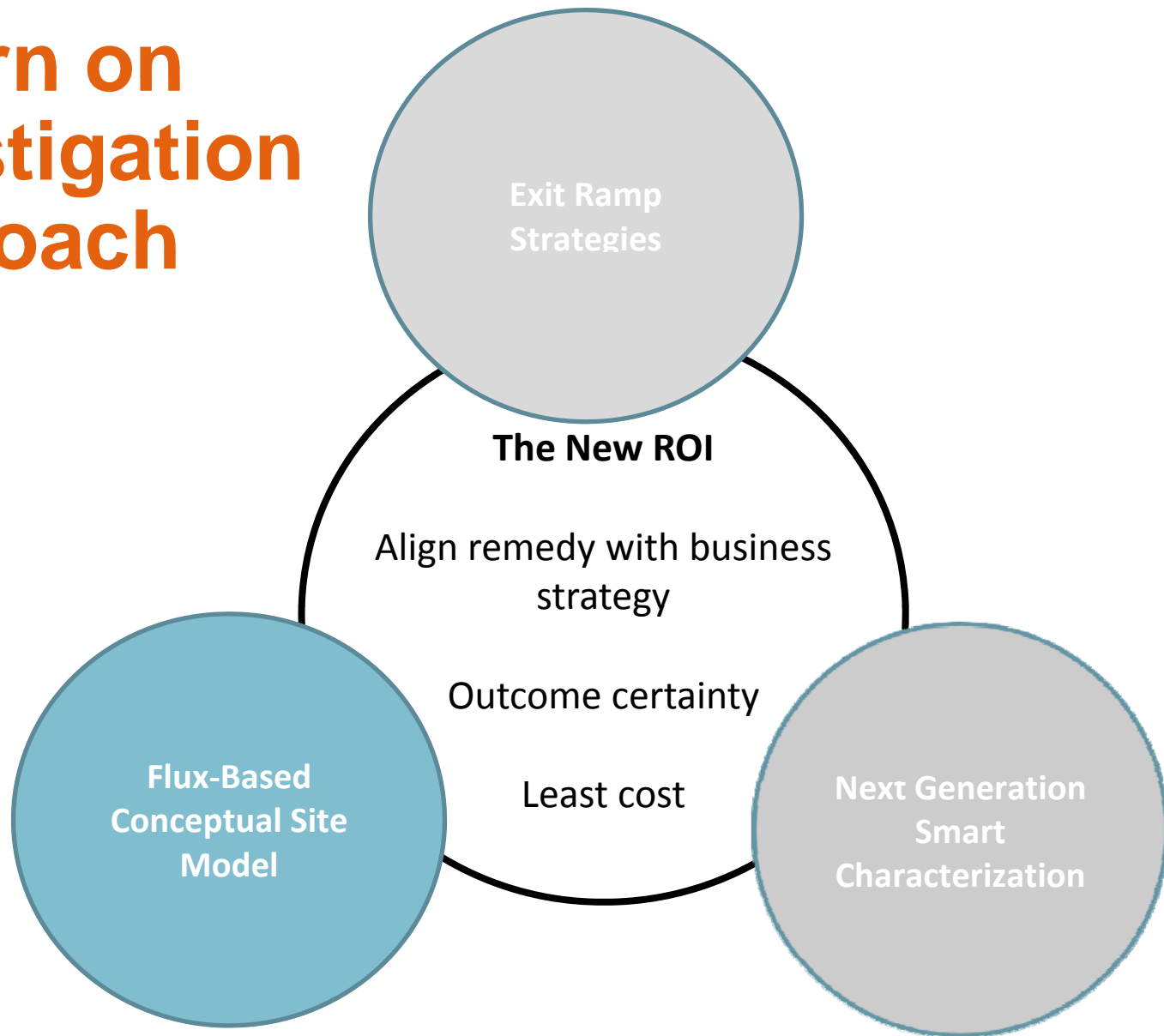
Result: Flux transect

- Plume is concentrated
- Pumping can be optimized
- Change cost and performance curve



Why is plume concentrated?

Return on Investigation Approach



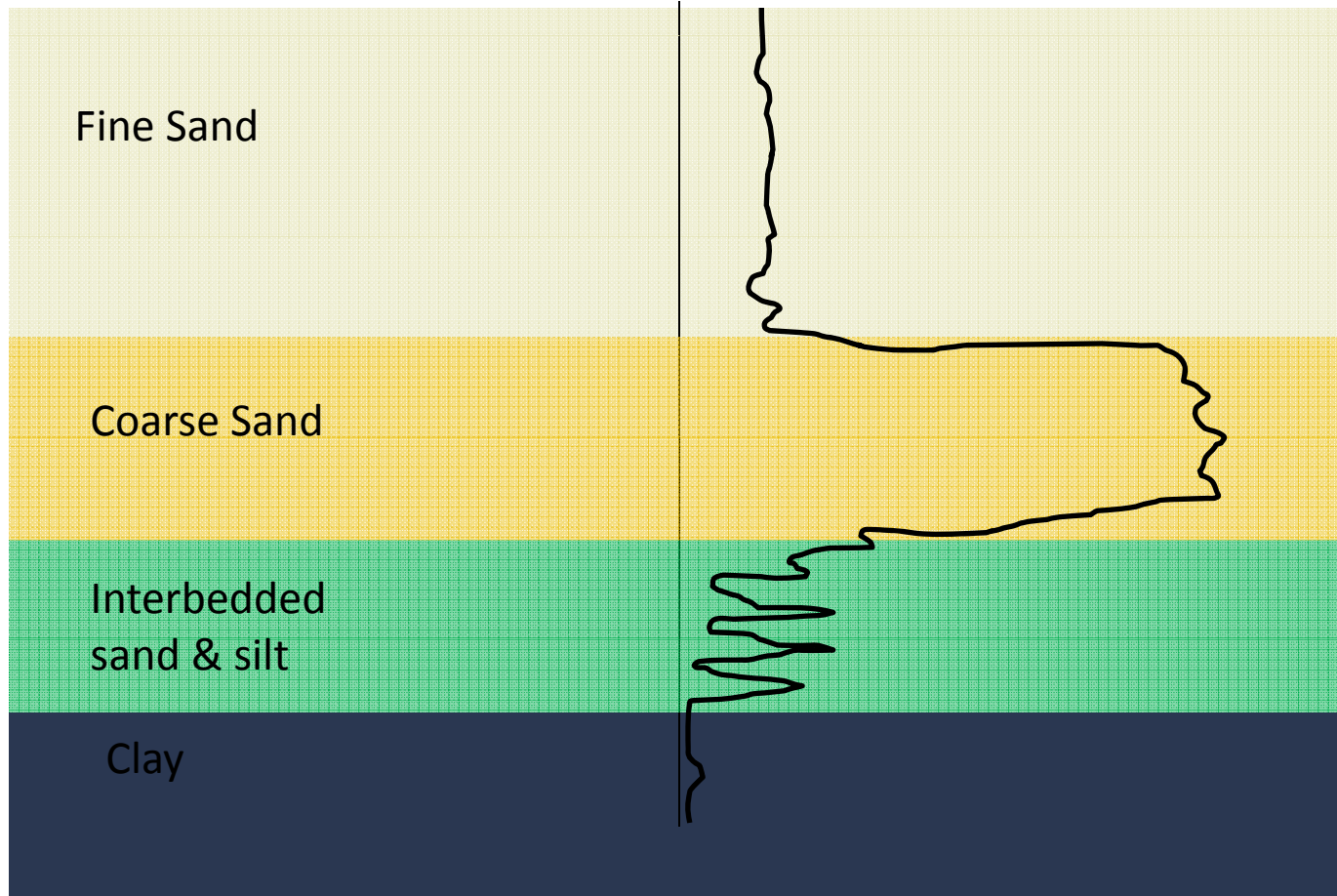
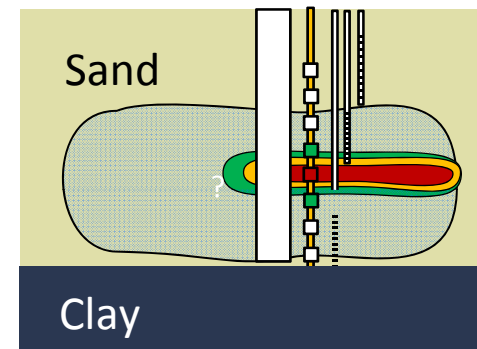
Stratigraphic Flux

HPT

Relative permeability

Find the flux

0.1 1.0 10 100



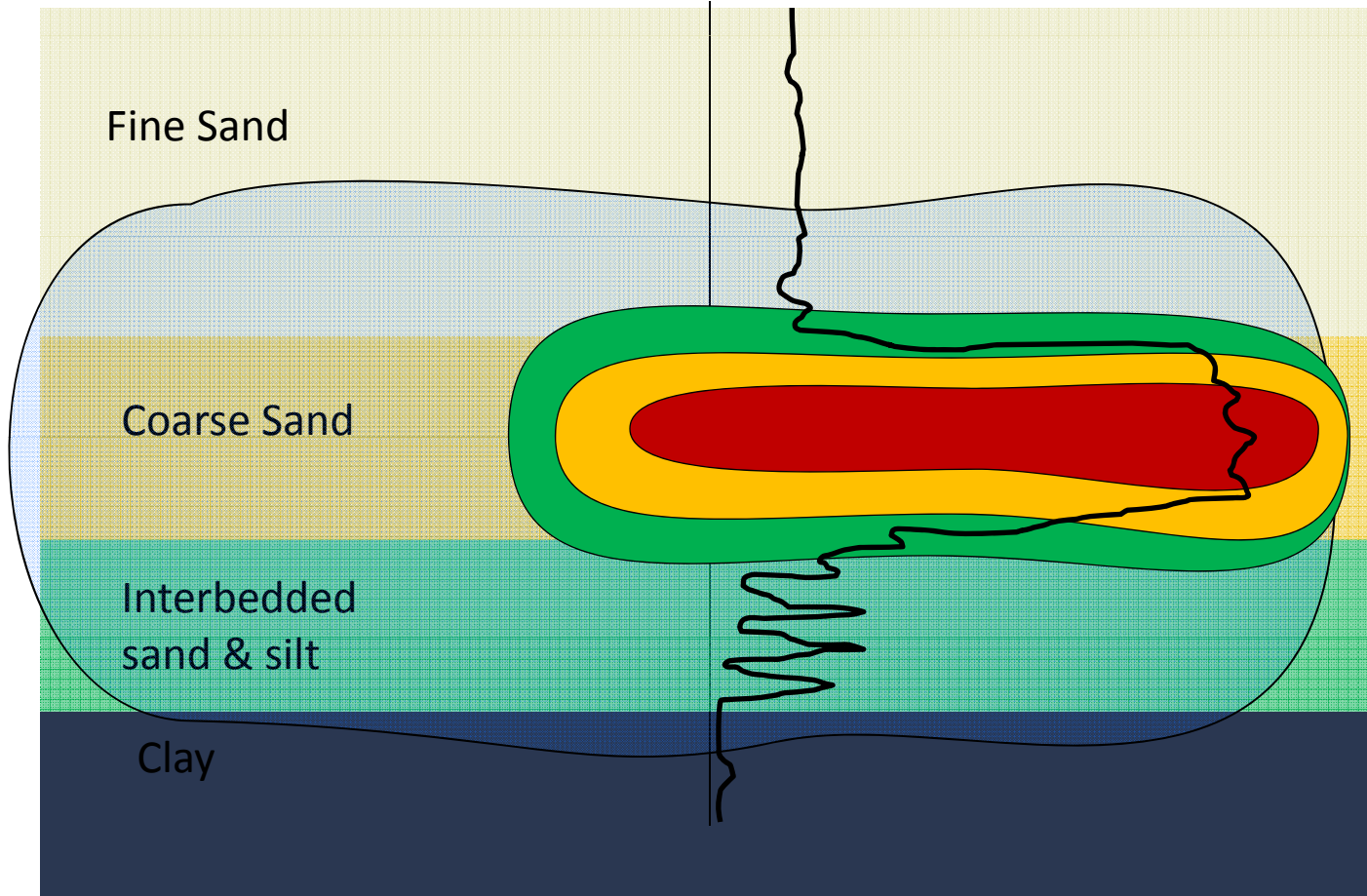
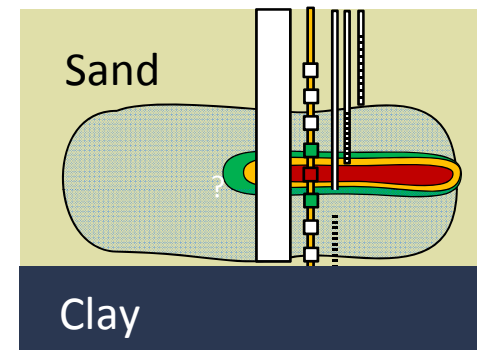
> 90% of **flow** is in coarse sand zone

Stratigraphic Flux

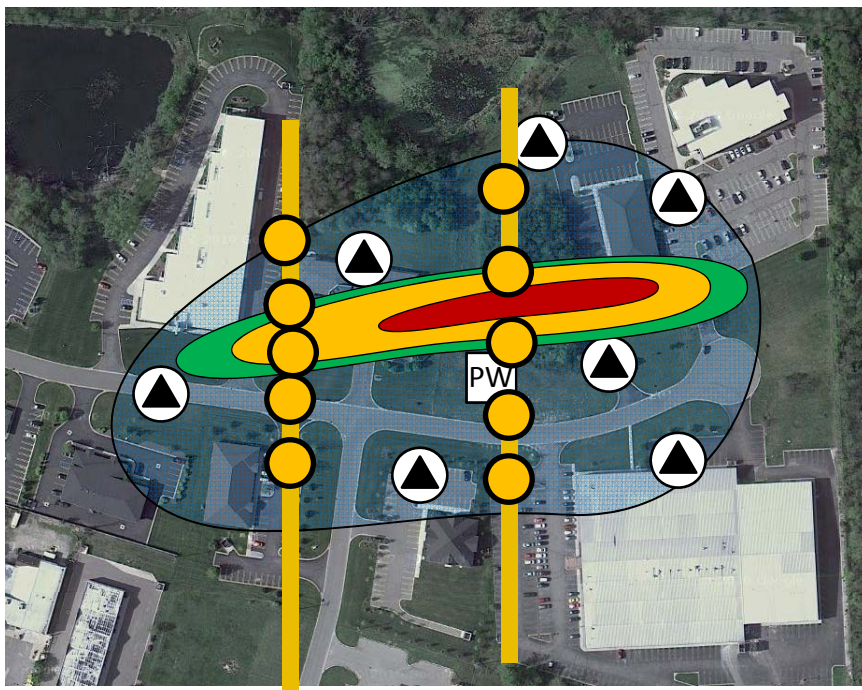
Find the flux

HPT
Relative permeability

0.1 1.0 10 100

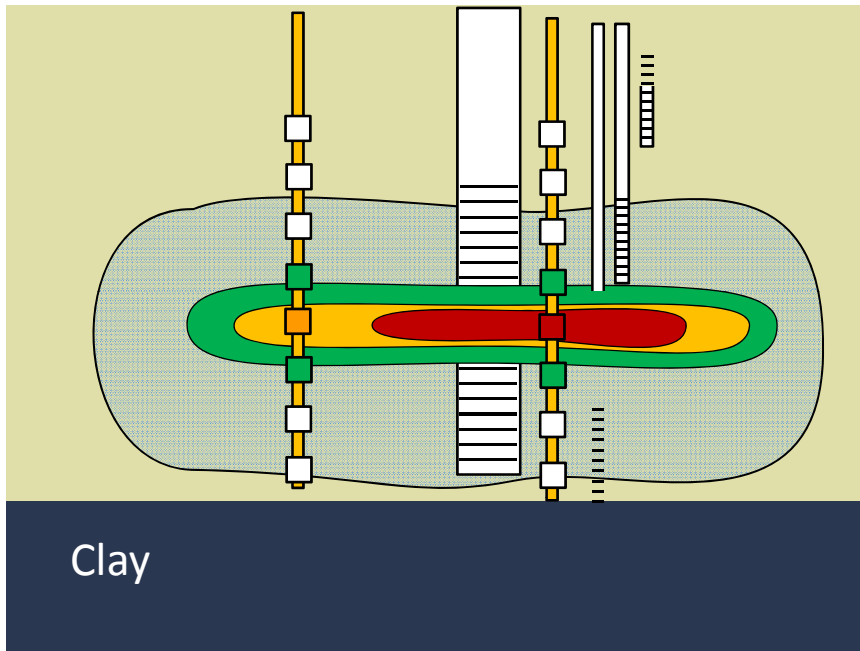


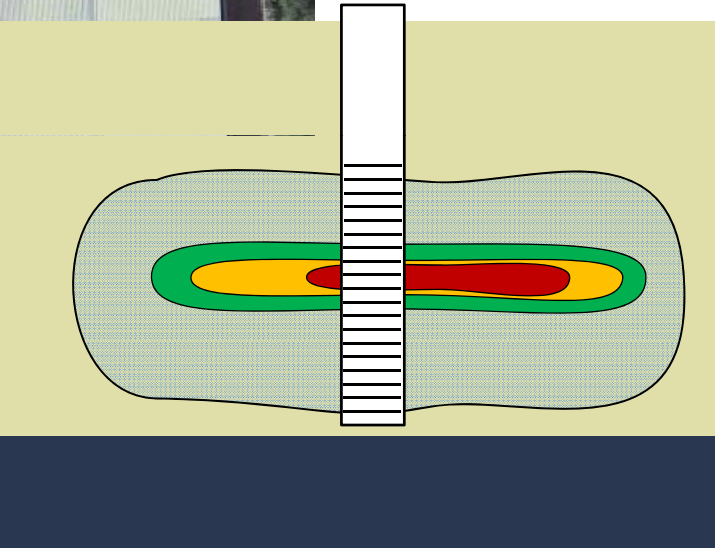
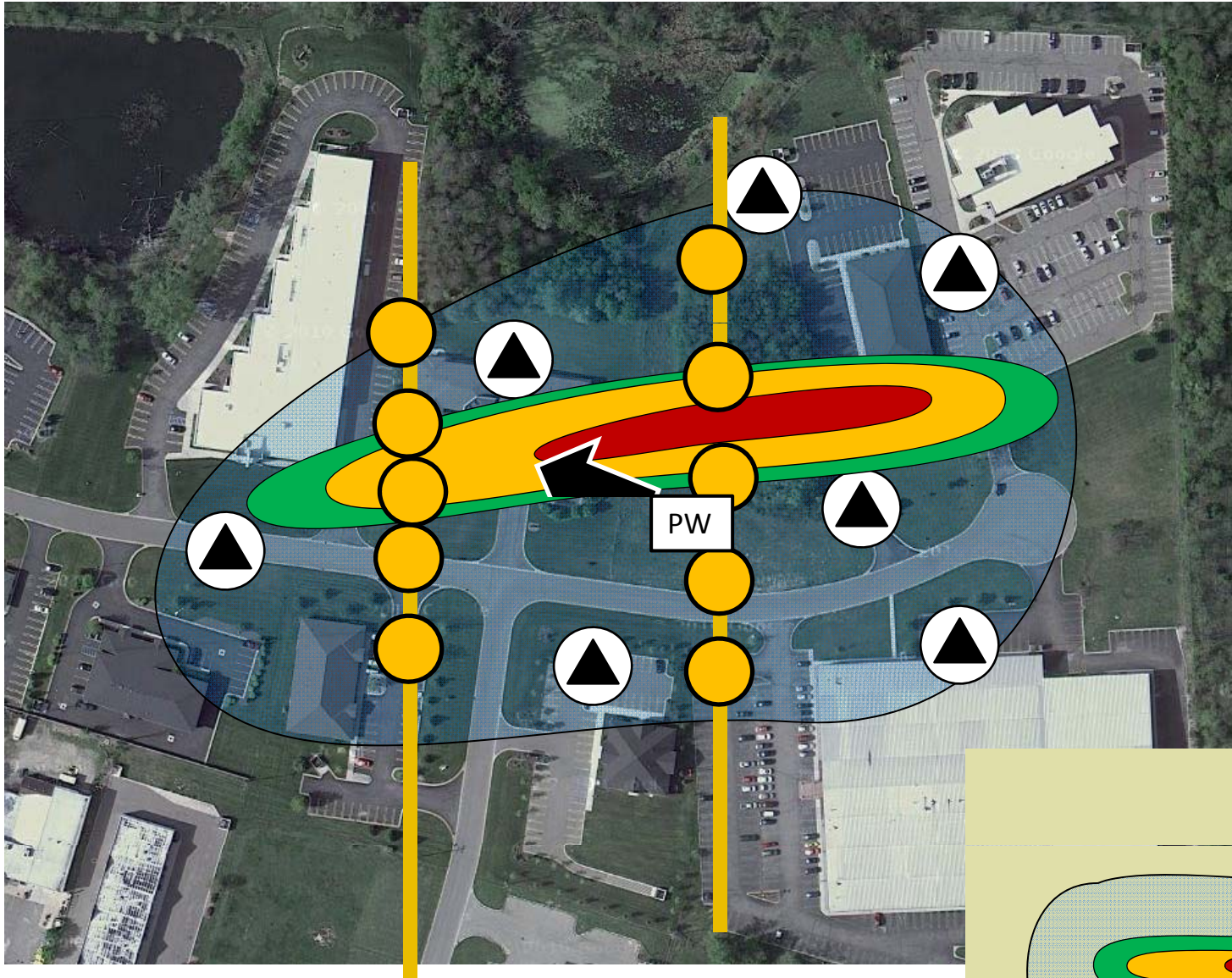
>90% of **flux** is in coarse sand zone



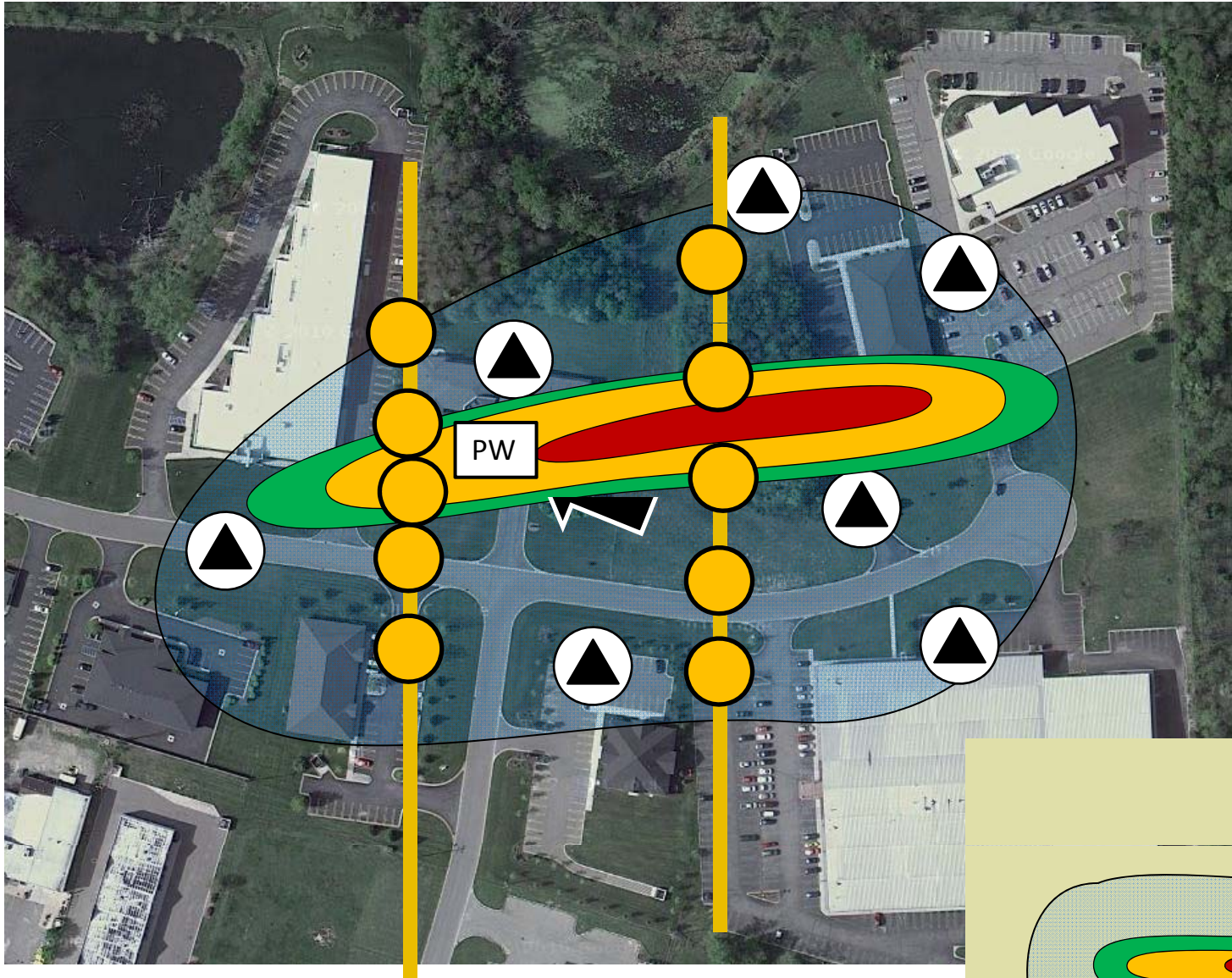
Exit Ramp 2 - OpEx Optimization

- Consider ROI payback on CapEx
- Verify plume geometry

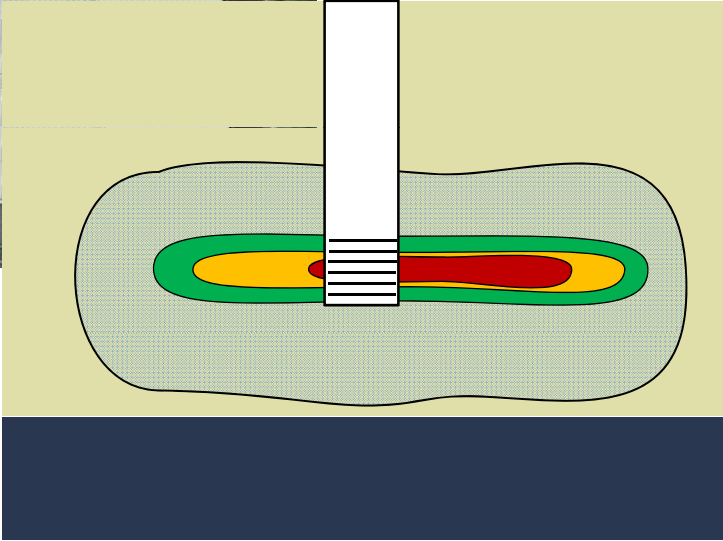




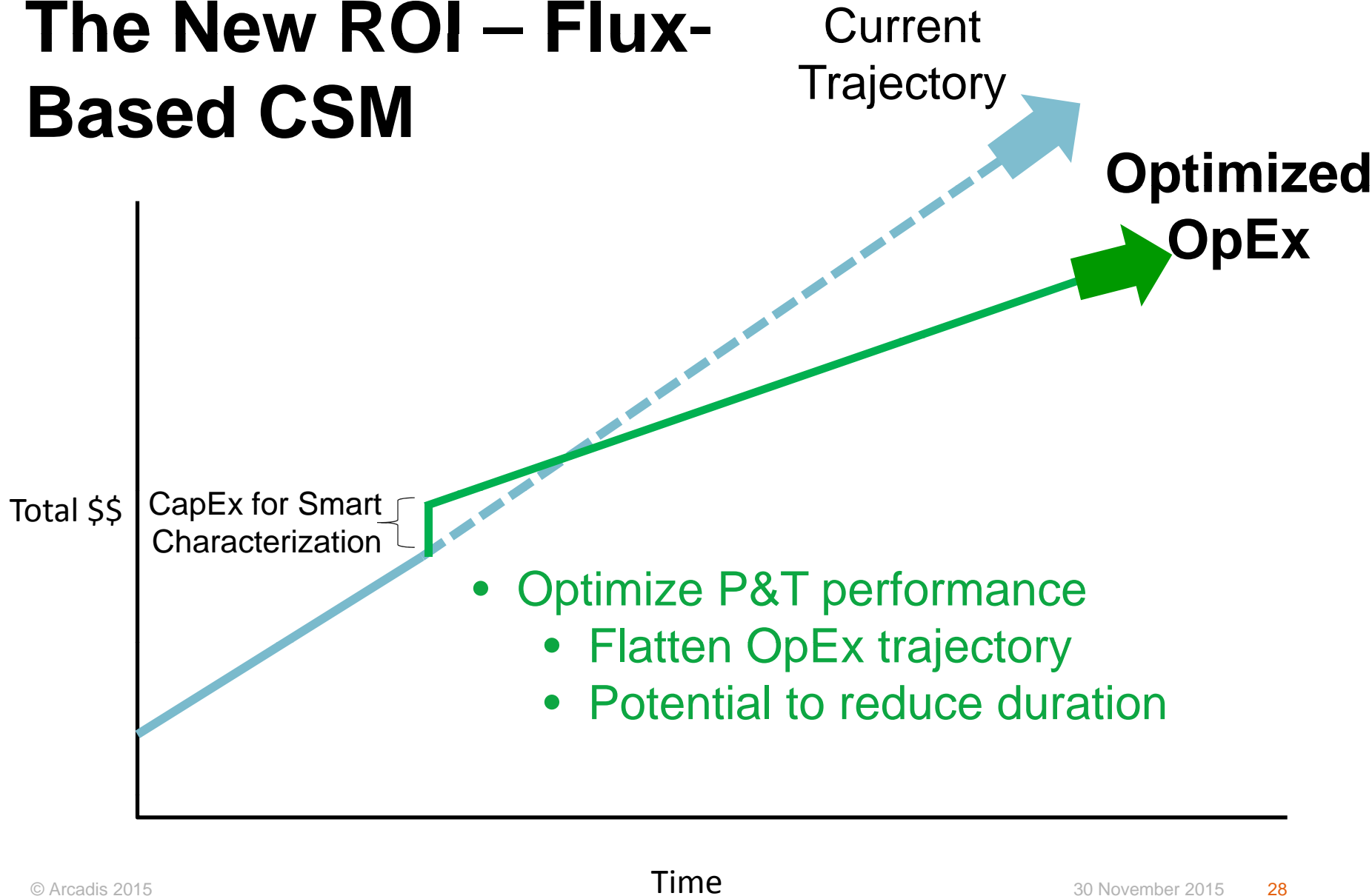
Focus pumping on flux...



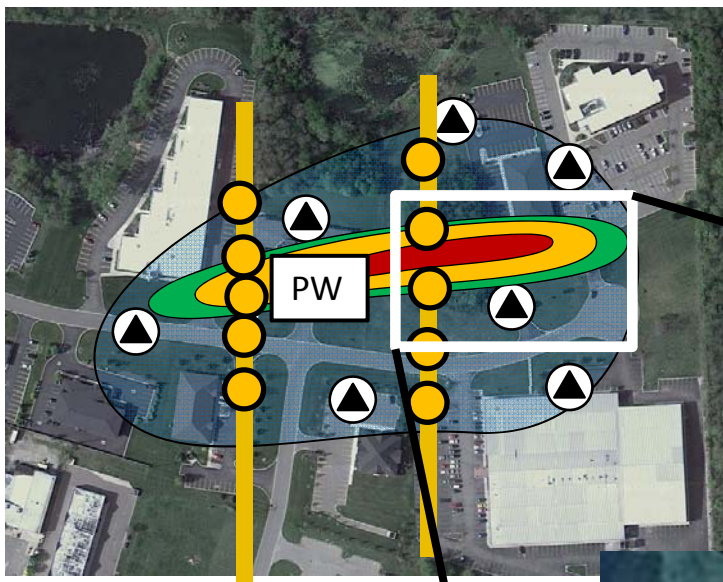
Optimize
OpEx,
enhance
mass
recovery
with less
flow



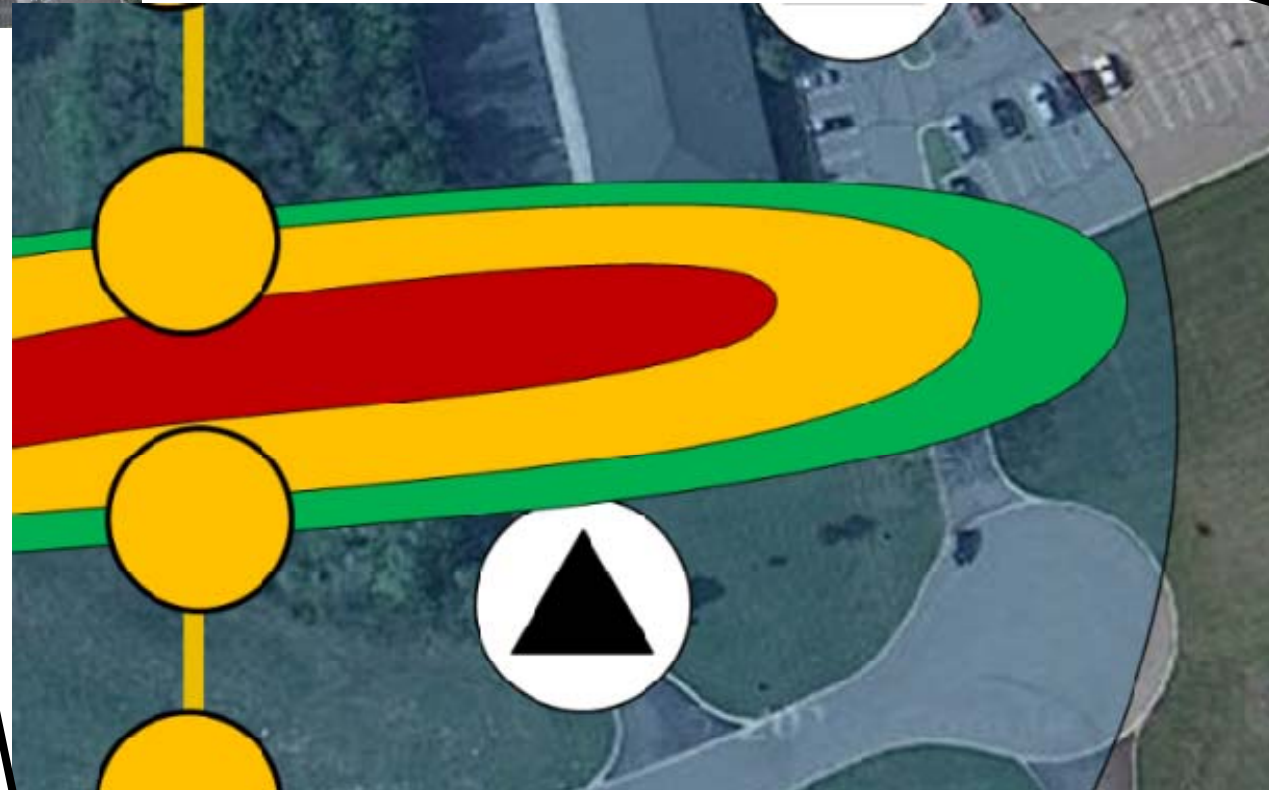
The New ROI – Flux-Based CSM



Outcome Certainty



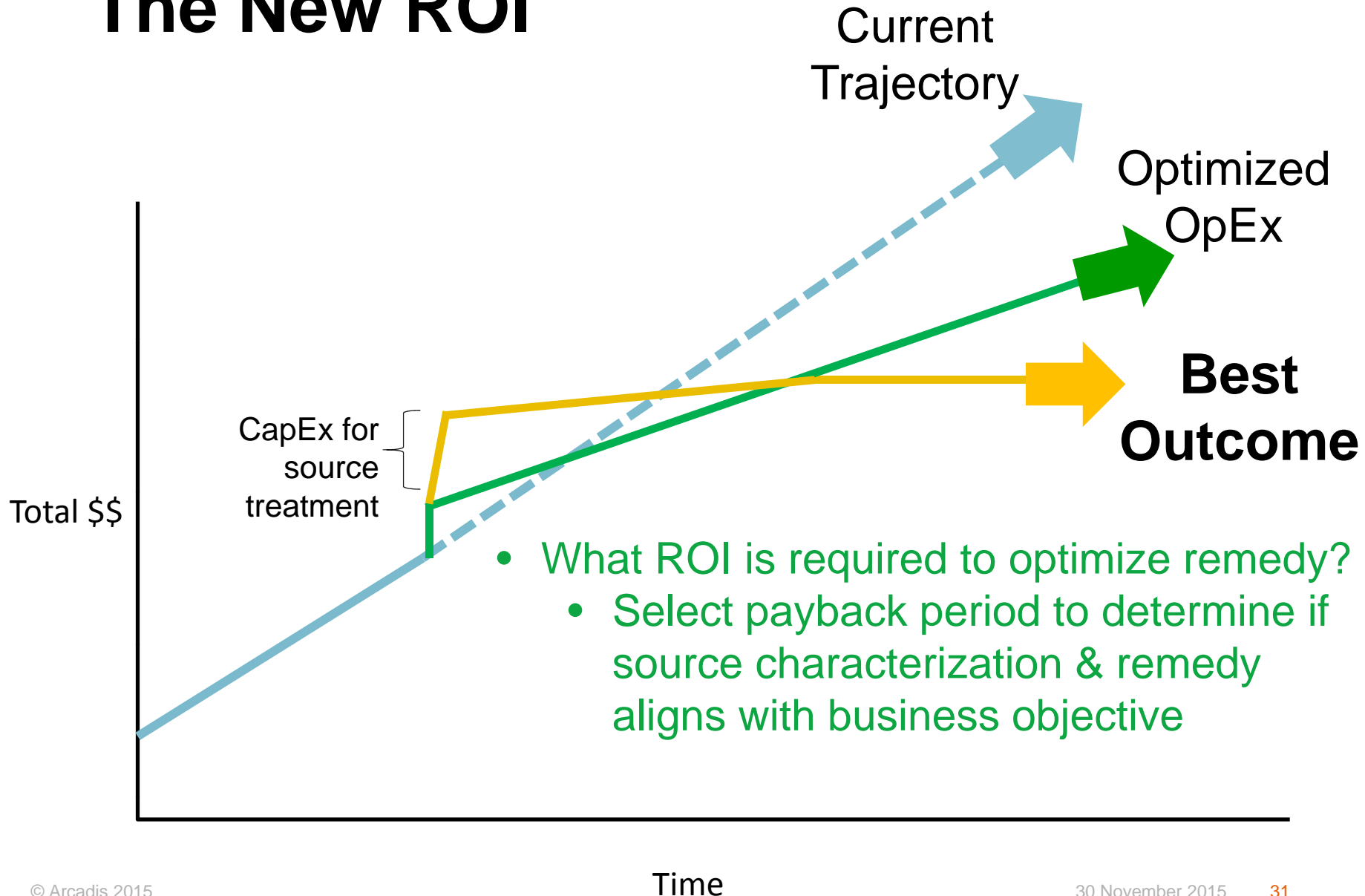
Duration of P&T
Or opportunity
for optimized
remedy
depends on
source



Calibrating ROI Expectations

- Remedy decisions dependent on more than least total cost
- Align the remedy to meet expectations that match your business needs in short- and long-term

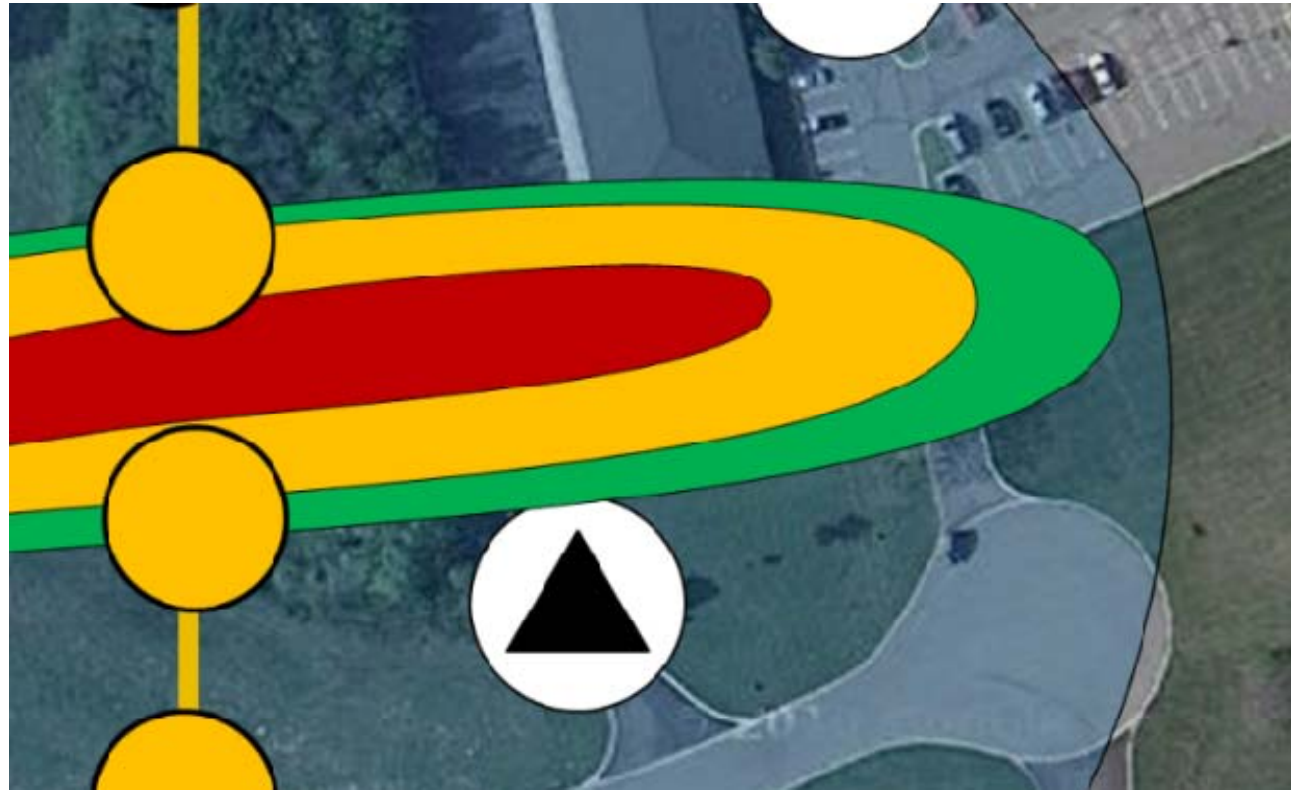
The New ROI



Source Treatment – Exit Ramp

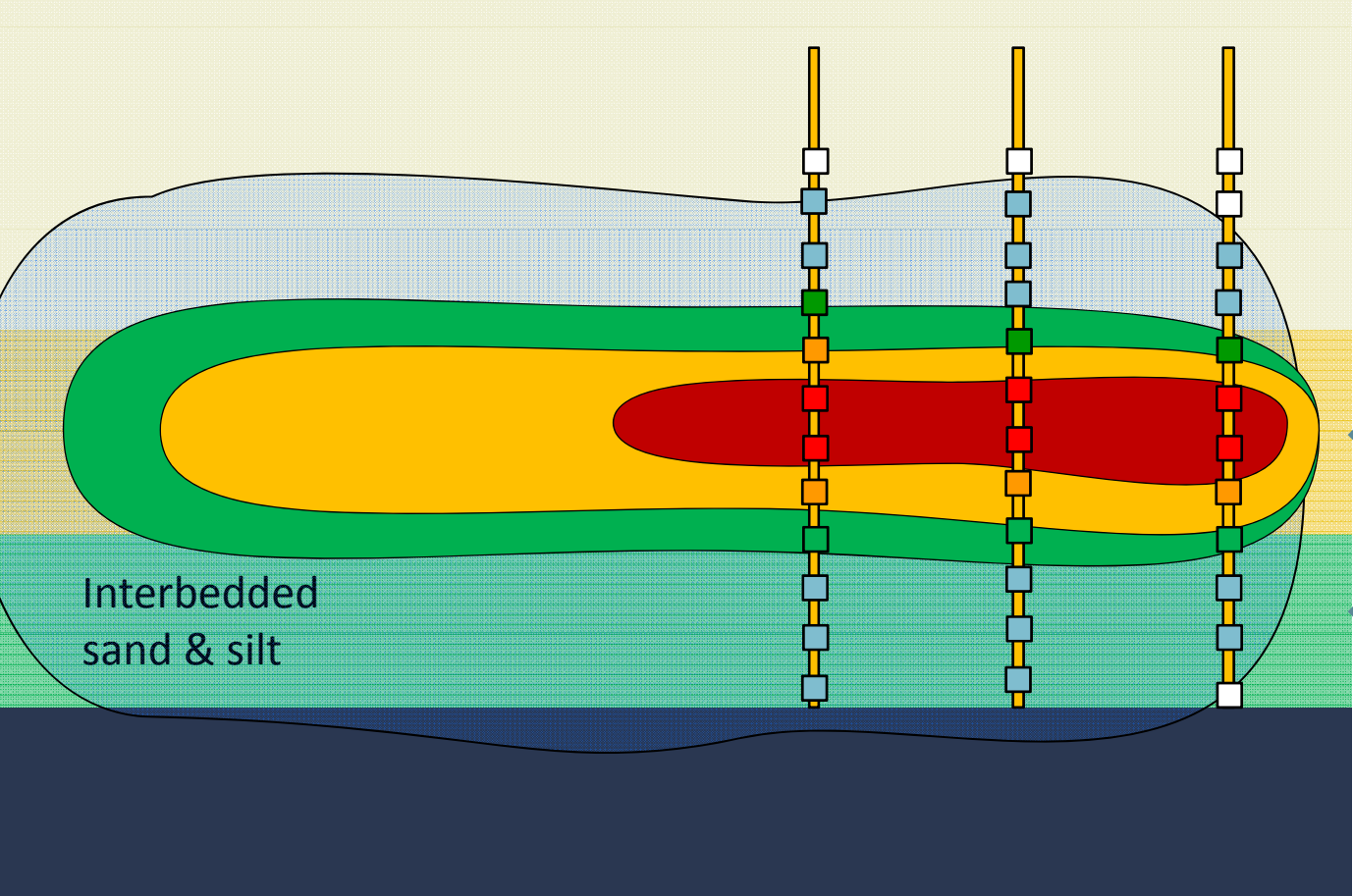
Flux-Based Source Evaluation

- Mass distribution relative to transport and storage zones dictate technologies, endpoint, and cost



Is Smart source characterization worth the effort?

Flux-based source evaluation – Transport zone

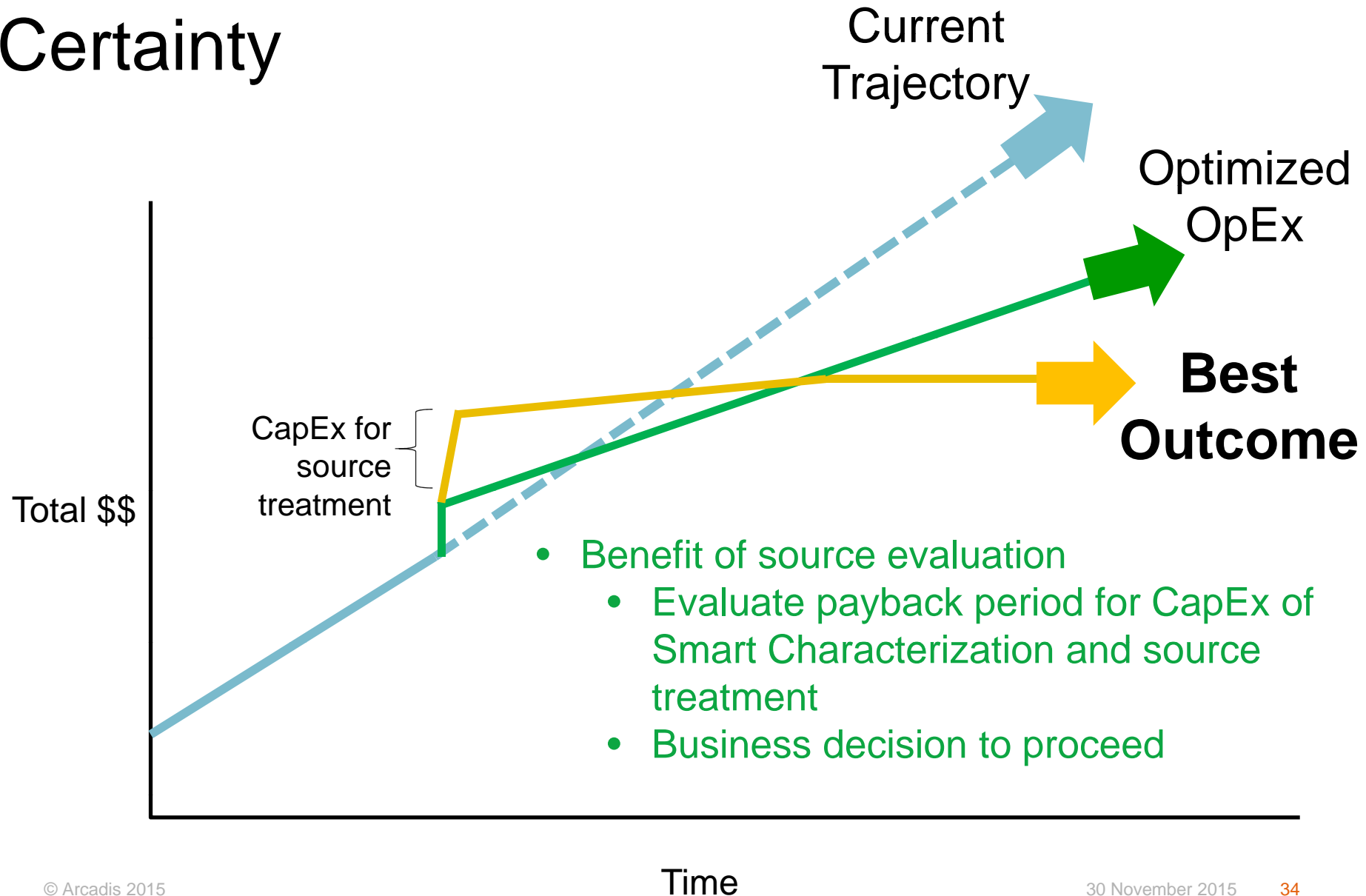


>90% of flux in coarse sand zone

Limited mass in difficult to treat storage zone

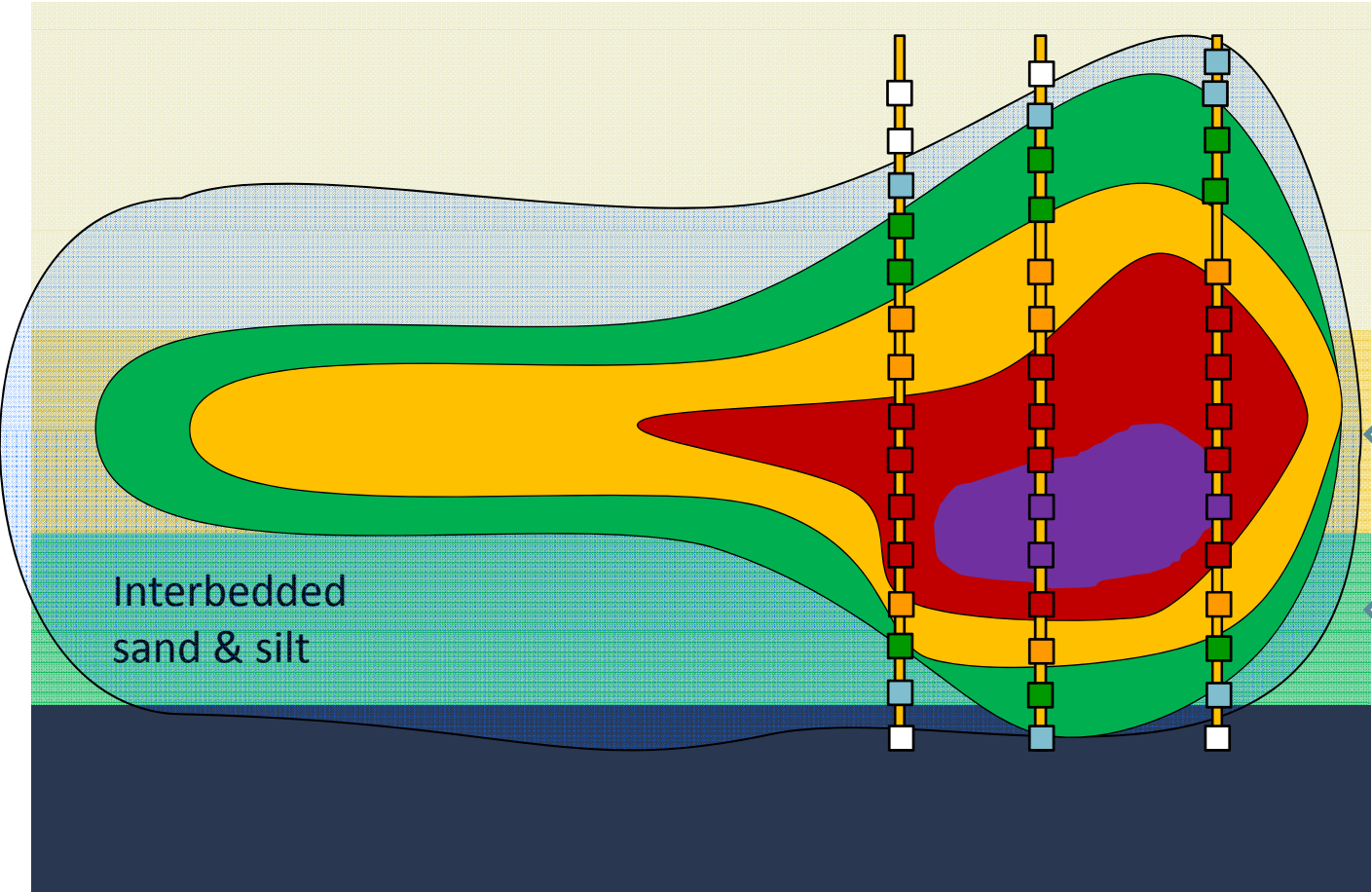
Size is key cost factor

The New ROI - Outcome Certainty



Flux-based source evaluation – storage zone source

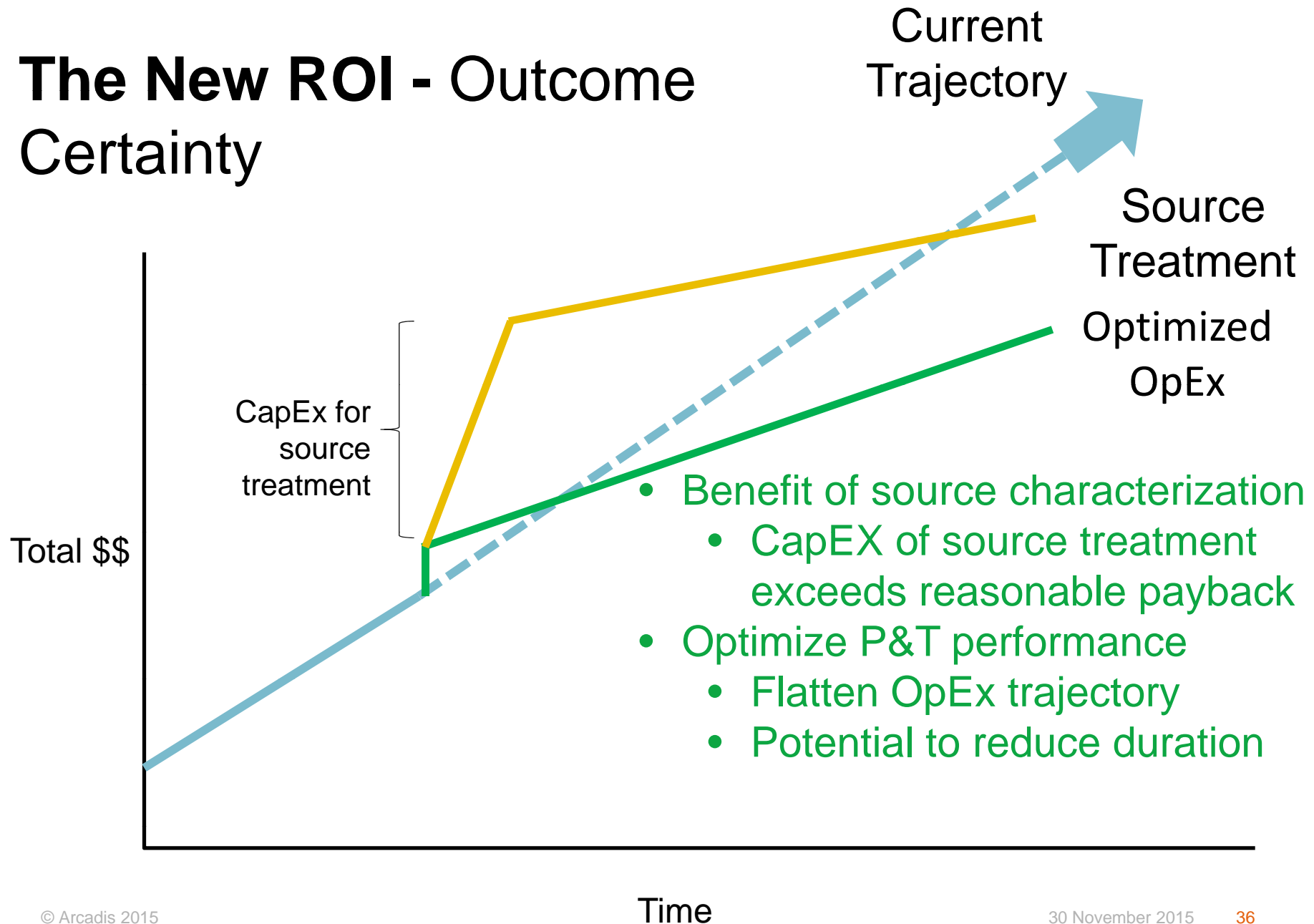
Treatment approach is key cost factor



>90% of flux in coarse sand zone

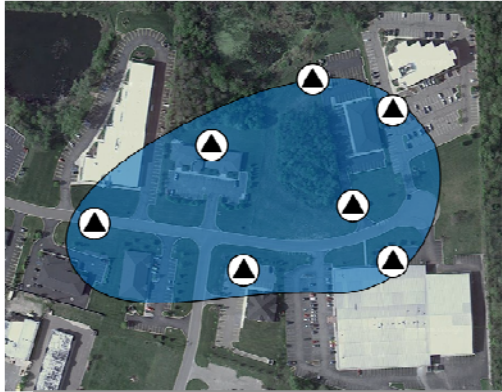
Significant mass in difficult to treat storage zone

The New ROI - Outcome Certainty



For new sites, do it right the first time:

CONVENTIONAL



Investigation

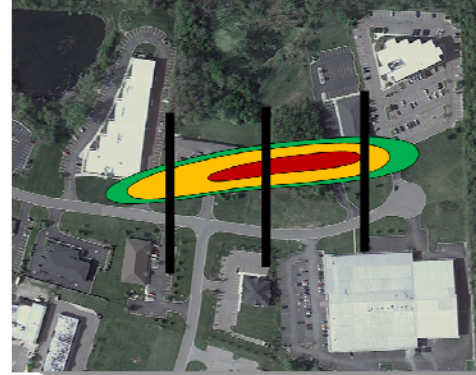
- **Years** of effort
- **Dozens** of reports & work plans

Remediation

- **Long-term, ineffective** remedy
- **Poor outcome certainty**

V
S.

SMART CHARACTERIZATION



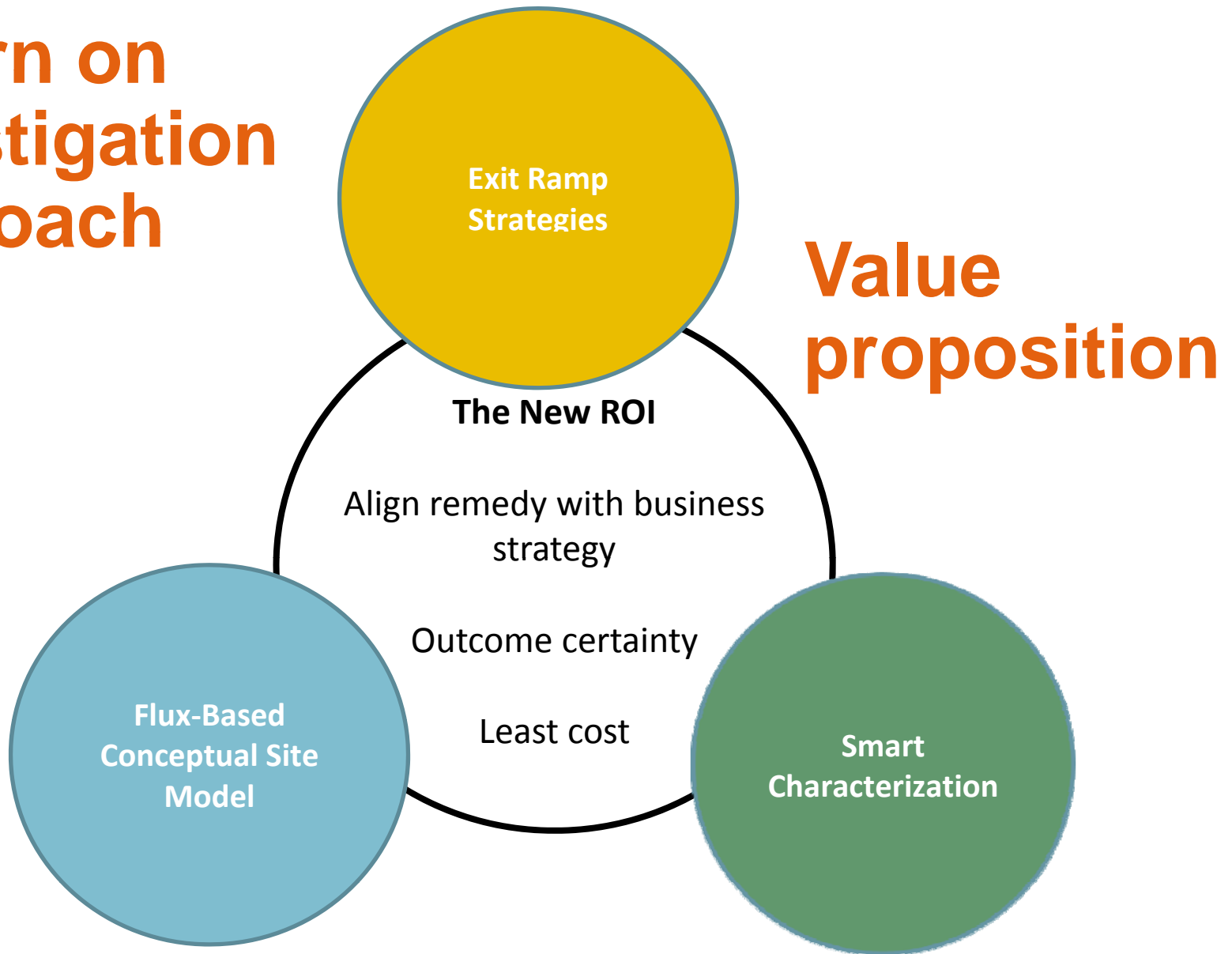
Investigation

- **Weeks** of effort using real-time methods
- **ONE** report & work plan

Remediation

- **Focused, cost-effective** remedy
- **Outcome certainty** with opportunity to match business objectives

Return on Investigation Approach



Questions?

Arcadis
Improving quality of life



Contacts



Joe Quinnan, PE (Wisconsin), PG

Global Director Site Investigations/Emerging Contaminants Lead

24 years of experience, 15 with Arcadis

Brighton, Michigan

JQuinnan@Arcadis.com

810.225.1943



Nick Welty, PG, CPG

Principal Geologist, Next-Generation Site Characterization Lead

10 years with Arcadis

Brighton, Michigan

NWelty@Arcadis.com

810.225.1958