

SCRIBE

Environmental Data Management

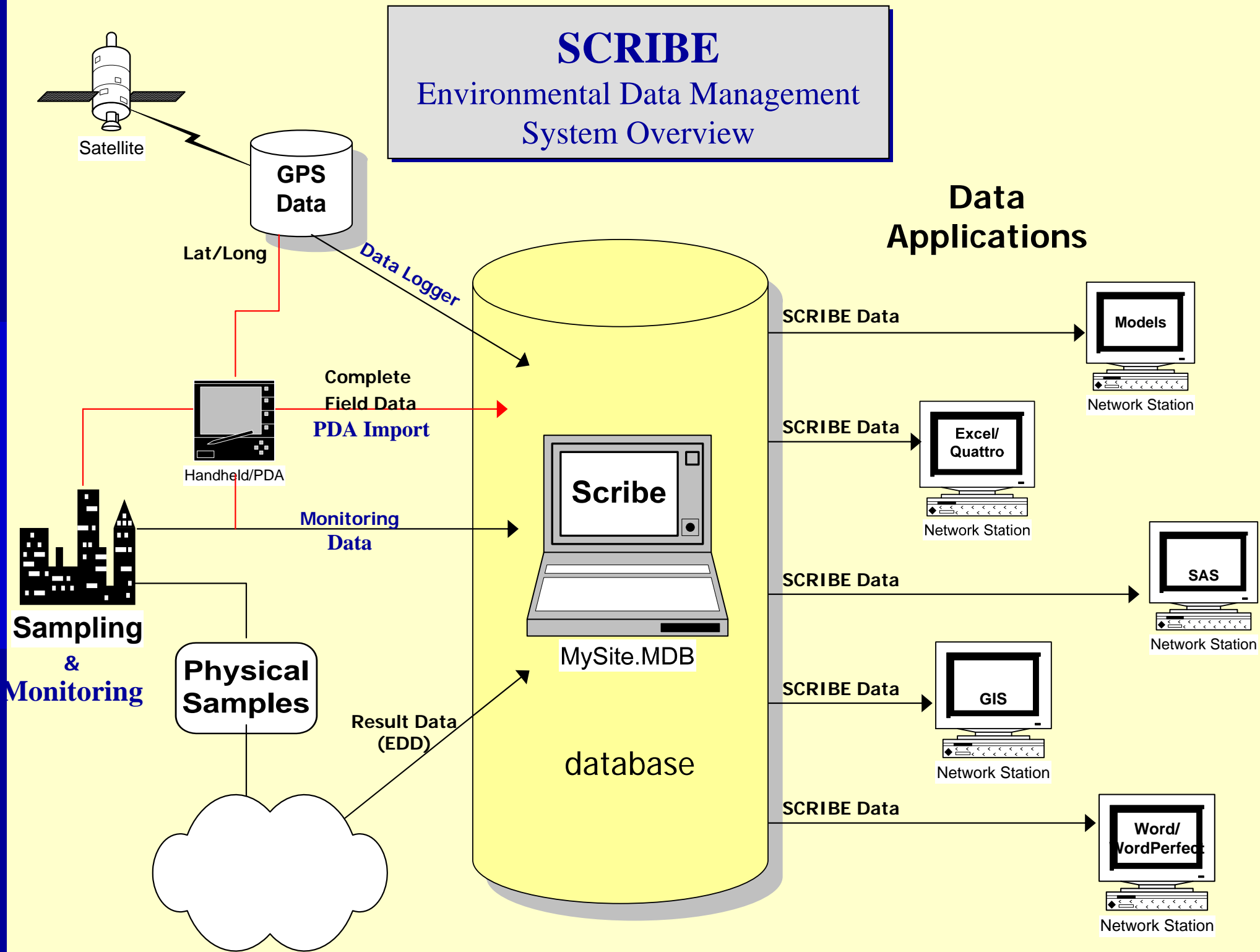
Robert W. Cibulskis
US Environmental Protection Agency
Environmental Response Team

Overview

- **Document Field Sample Collection**
- **Capture Spatial Data (GPS)**
- **Generate Sample Labels and COC**
- **Track Field Samples to Labs**
- **Import Lab Results (EDD)**
- **Query Database and Produce Reports**

SCRIBE

Environmental Data Management System Overview

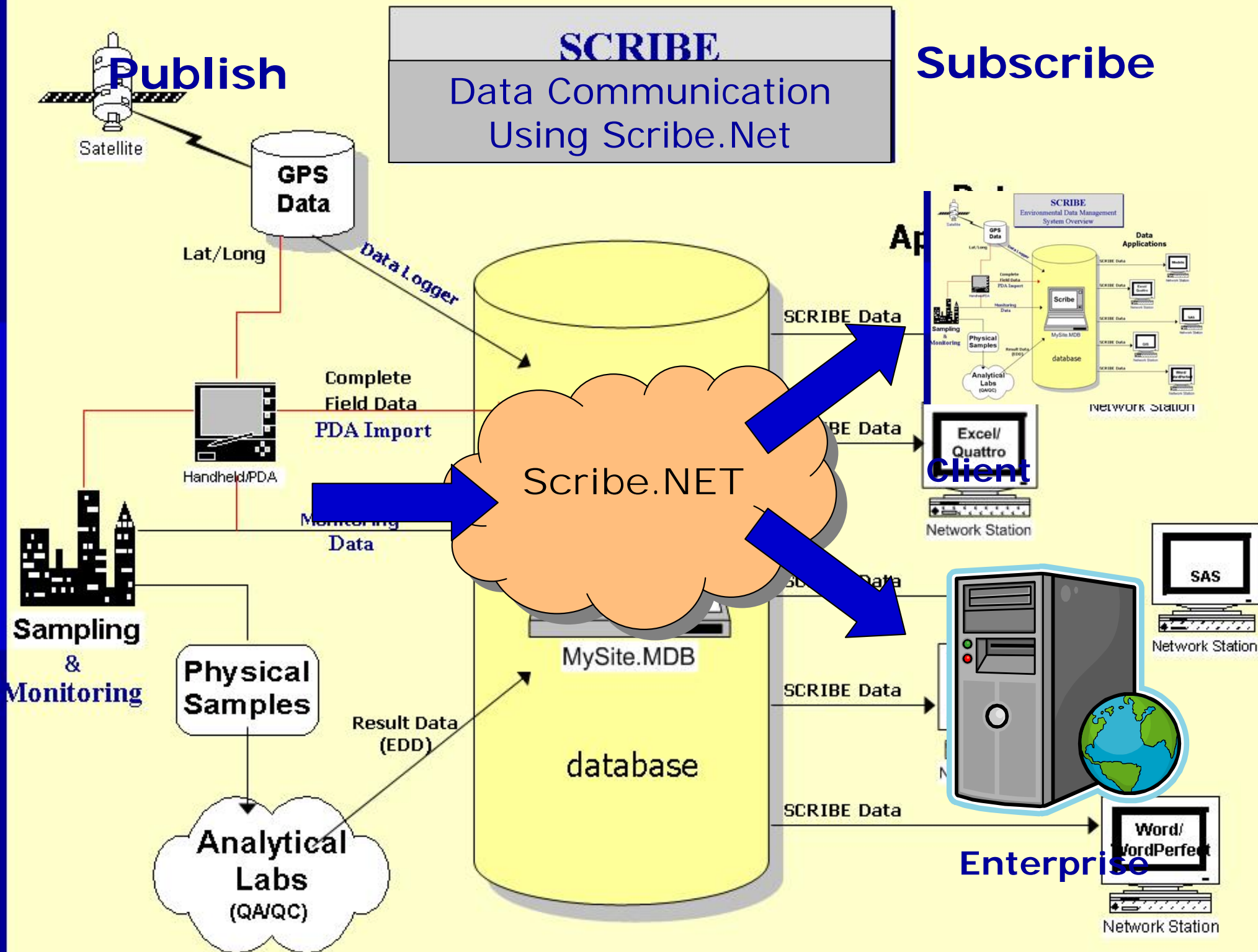


SCRIBE

Data Communication
Using Scribe.Net

Subscribe

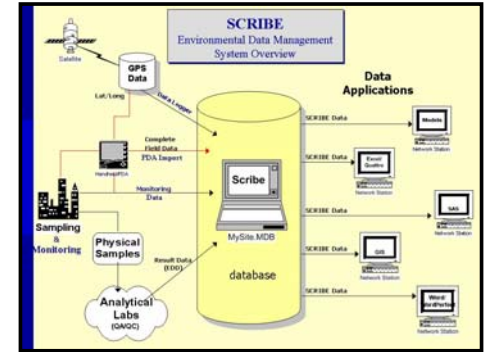
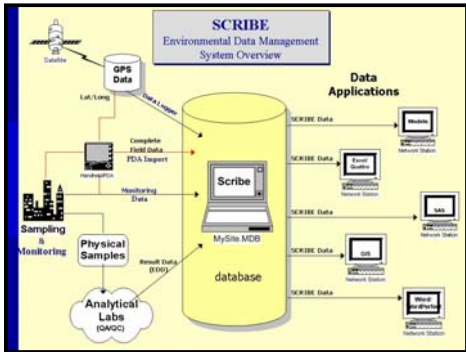
Publish



Publish

Multiple-Project
Publication Model

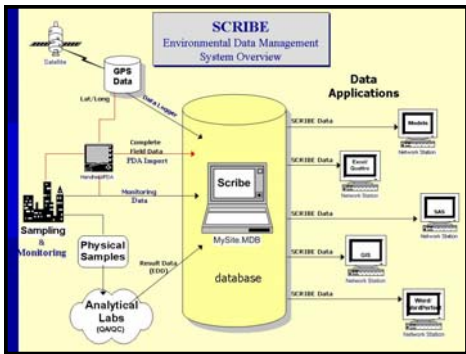
Subscribe



Sampling

Scribe.NET

Client

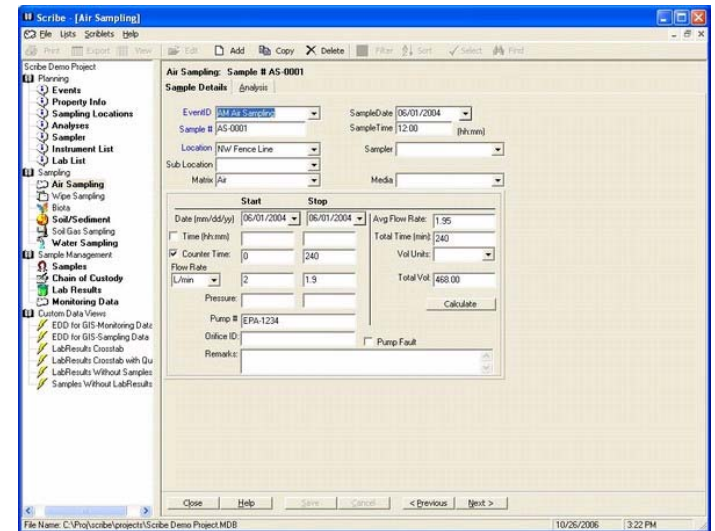


Analytical

Enterprise



Data Collection Tools



Environmental Response Team



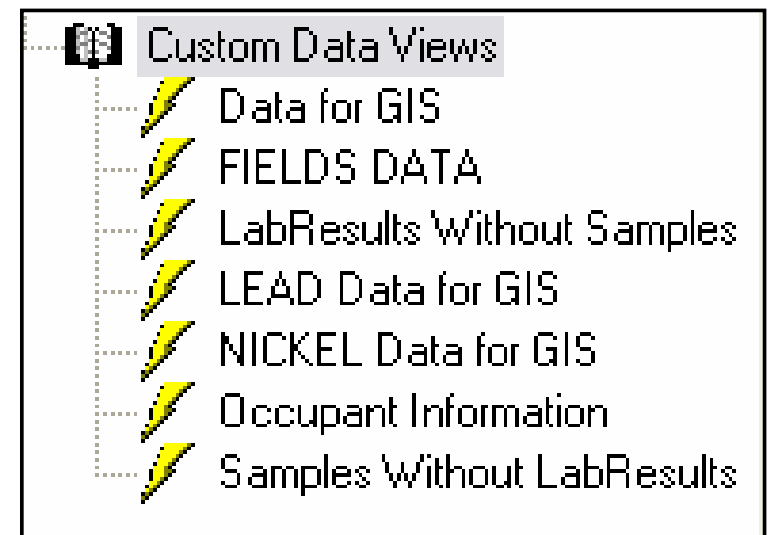
Data Integration

- ❑ Back-end Microsoft Access Database
- ❑ Scribe can import a variety of data
 - ADR
 - Forms II Lite
 - SEDD
 - NARAC
 - Any .CSV or spreadsheet format
- ❑ Scribe can provide data to other resources
 - ArcGIS
 - Oracle Database Applications
 - Word Processing and Spreadsheets



Queries

- ❑ Custom Data Views are site-specific queries added to the database
- ❑ Accessible with one click via the user interface
- ❑ Useful when a specific question is asked repeatedly of the data
- ❑ Example: Results above an action level





Import Scripts

- Mappings of imported data can be saved within the database
 - Eliminate the need to re-map data with subsequent data from the same source
 - Saves time and provides consistency
- Useful for documentation purposes especially when bringing in historical data

Script Name:



Layouts

- ❑ Sections of Scribe that are not used can be turned off to streamline the presentation of the data
- ❑ Each section of Scribe can accommodate many different layouts
- ❑ Allows users to re-caption, arrange and display fields according to their needs
- ❑ Very useful for COCs and delivering data to other systems



Project Templates

- ❑ Customizations in a previous Scribe project i.e. layouts, queries, and import scripts can be brought forward into new projects
- ❑ Custom templates can be developed based on site type that will automatically incorporate layouts, import scripts, queries and picklist values
 - SVI Template
 - Groundwater Template
 - Activity-Based Sampling for Asbestos Template



Division of Labor

- Many times work on a site is broken up by type
 - Field crews deal with samples
 - Analytical information is delivered to a QA group
- Scribe.NET allows you to maintain multiple projects for the same site and then join that data in a master subscription
- A good way to accommodate multiple contractors or roles on a large project
- Example: WTC Residential Survey



Site Transition

- ❑ Scribe is a known data format that the Removal program is required to use
- ❑ As sites transition to from removal to remedial, make sure you get the complete Scribe data package in addition to hard copy reports and the site file
- ❑ Build on what was done instead of starting from scratch



Deliverable

- Require Scribe as a project deliverable in addition to a report
- Good compromise when dealing with an established site that already has a data system in place
 - They can continue managing their data but the data deliverable to EPA is consistent and uniform
- Allows EPA to implement systems to combine Scribe data from many sites for other uses (GIS, regional databases, etc.)



More information

- Scribe website
 - <http://www.epaosc.org/Scribe>
- Scribe.NET website
 - http://www.epaosc.org/scribe_net
- ERT Software Support
 - ertsupport@epa.gov
 - 24/7 Hotline Number: 1-800-999-6990